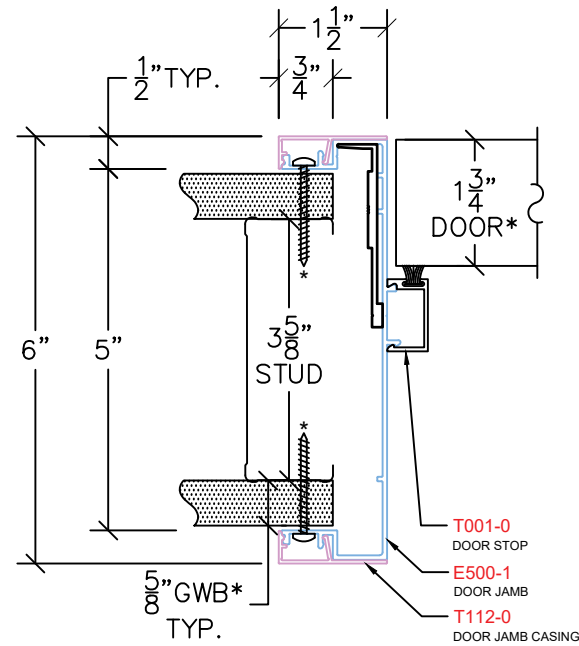
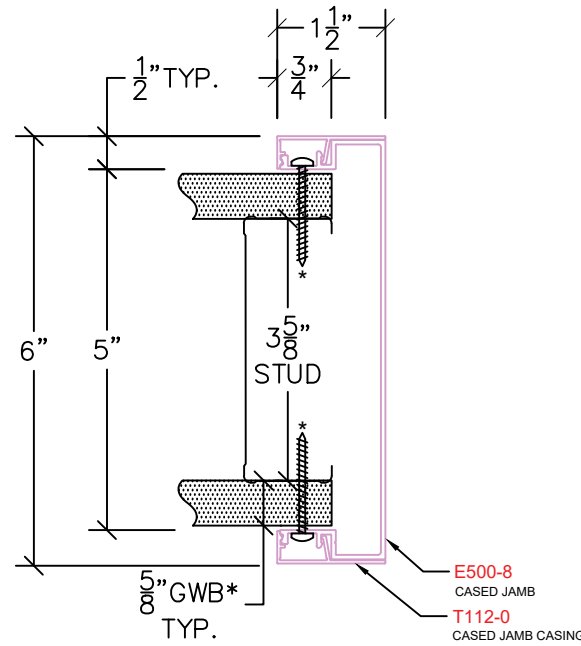


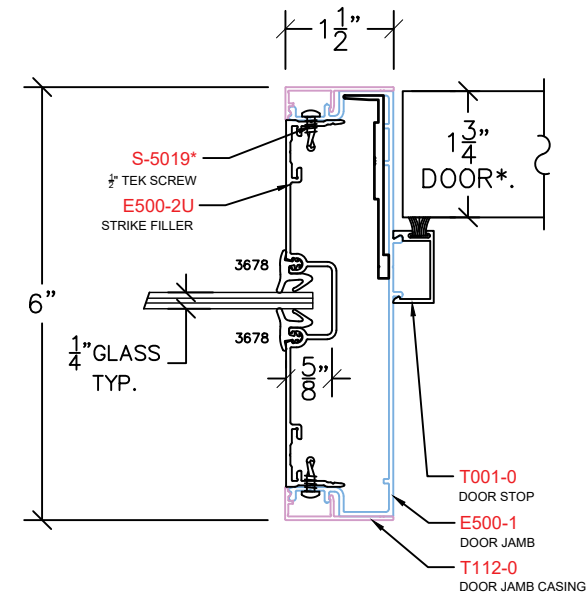
# EAGLE SECTION VIEWS



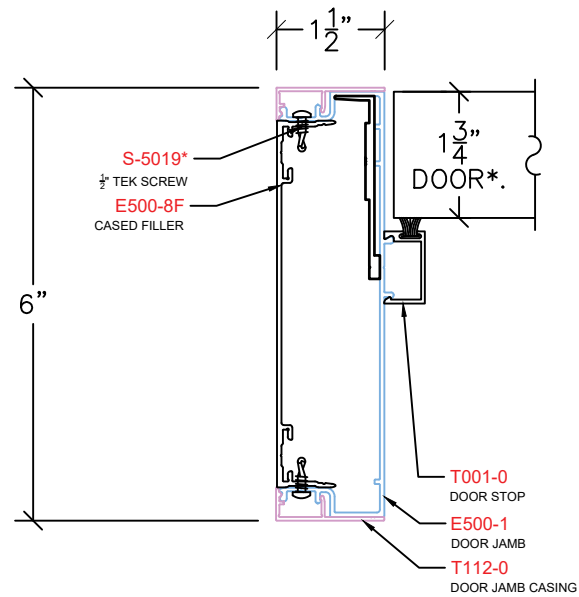
DOOR JAMB E100



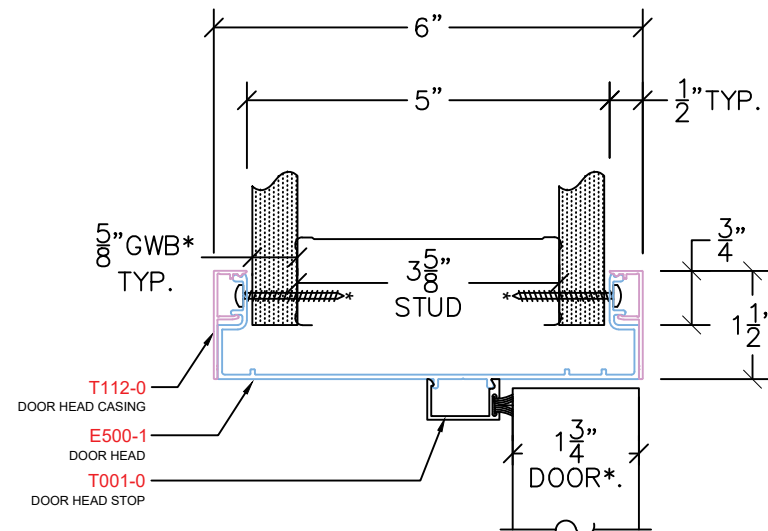
CASED JAMB E140



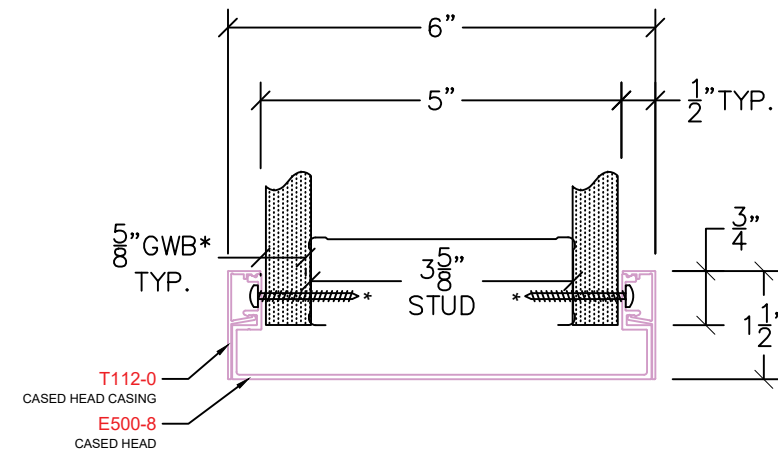
DOOR JAMB SIDELIGHT E150



DOOR JAMB W/ CASED END E150F



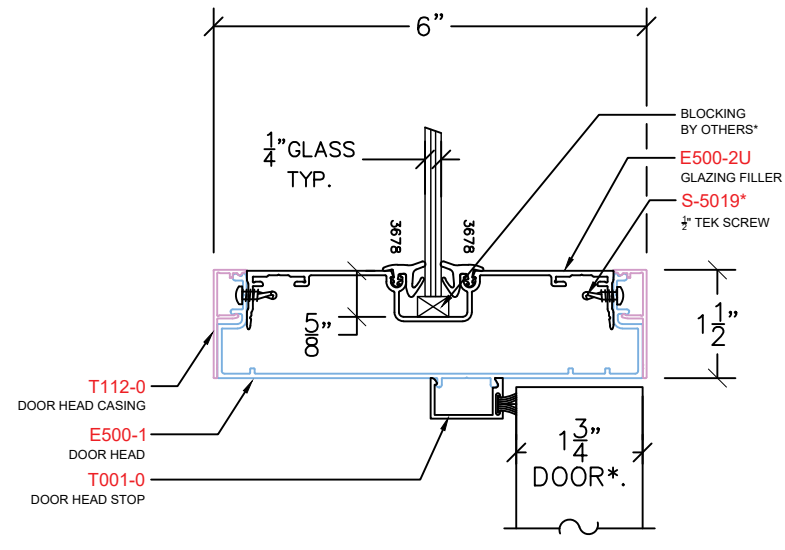
DOOR HEAD E200



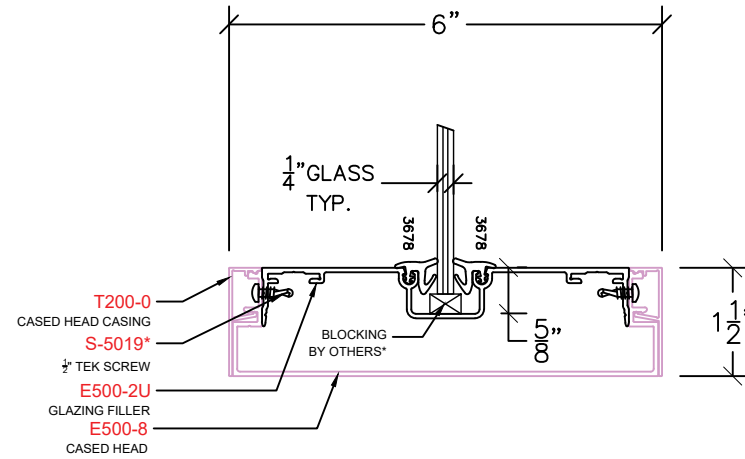
CASED HEAD E214

NOTES: SPECIAL HARDWARE PREPS LISTED IN THE FABRICATION NOTES MAY REQUIRE FIELD NOTCHING OF THE WALL, STUDS, AND/OR DRYWALL (i.e., ELECTRONIC POWER TRANSFERS, CONCEALED CLOSERS). IN SOME INSTANCES, THE ALUMINUM FRAMES THEMSELVES WILL NEED FIELD MODIFICATIONS TO ACCOMMODATE SPECIALTY HARDWARE REQUIREMENTS, AND ADDITIONAL COORDINATION WITH OTHER TRADES MAY BE REQUIRED PRIOR TO OR DURING INSTALLATION.

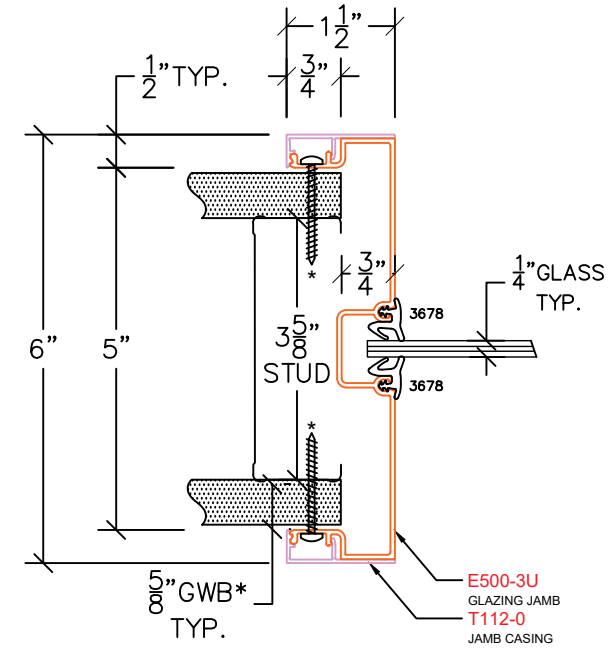
# EAGLE SECTION VIEWS



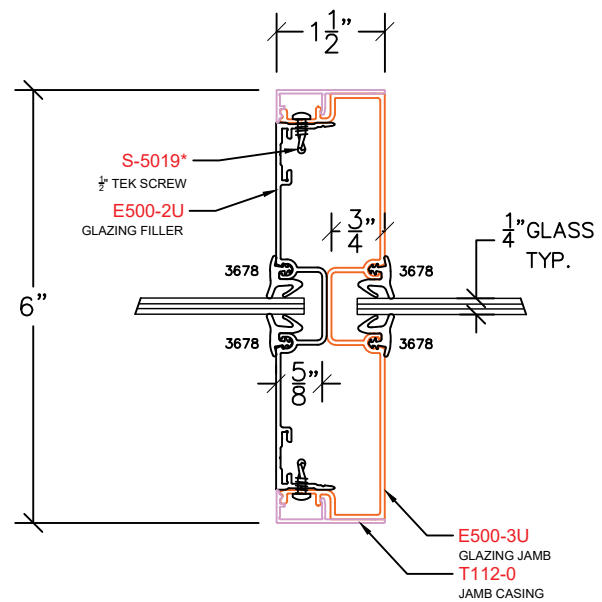
DOOR HEAD TRANSOM E215



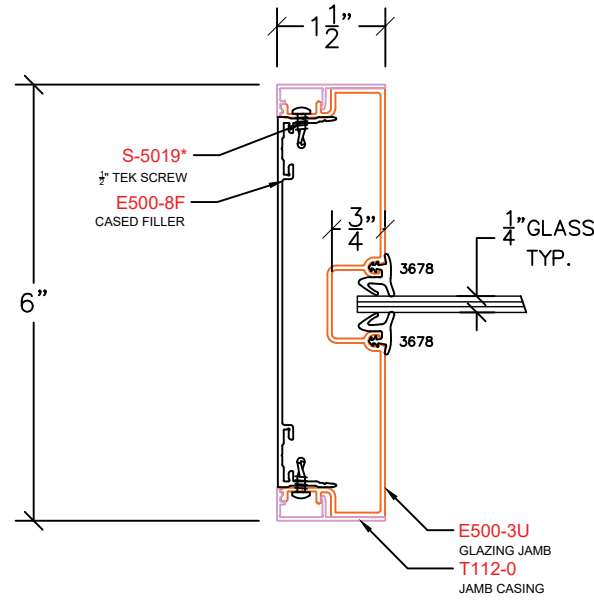
CASED HEAD TRANSOM E216



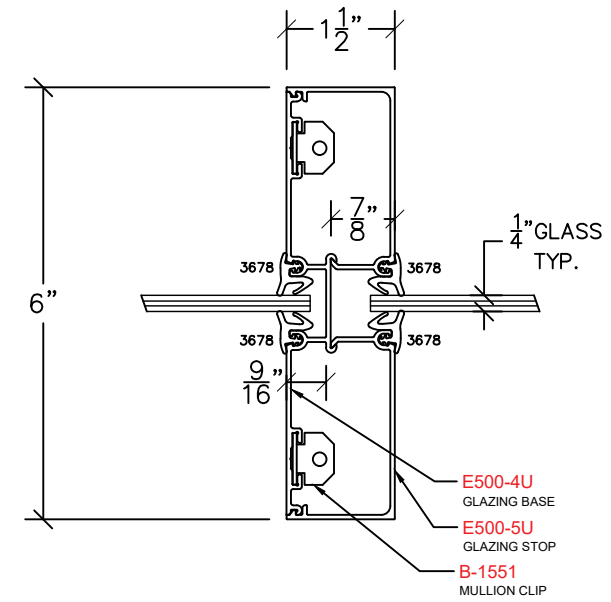
GLAZING JAMB E300



GLAZING INTERMEDIATE VERTICAL E303



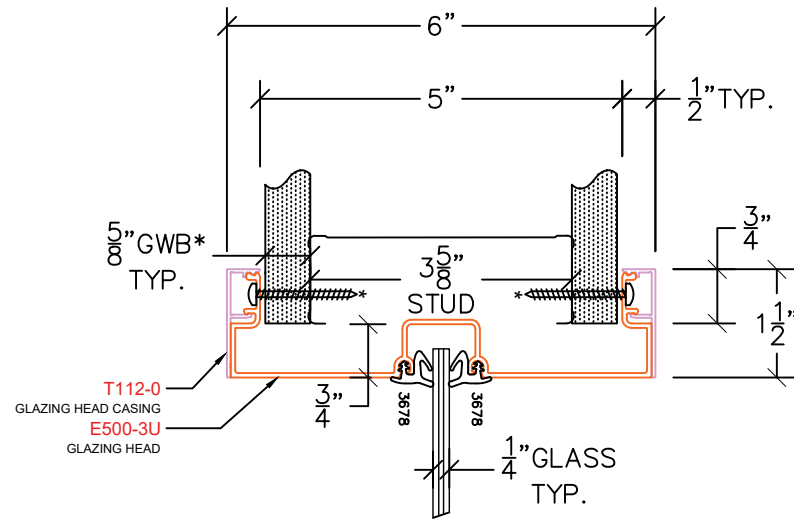
GLAZING INTERMEDIATE VERTICAL E303F



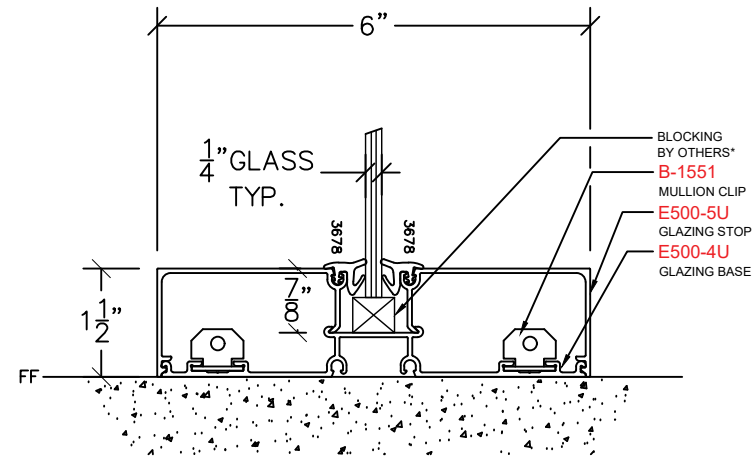
GLAZING INTERMEDIATE VERTICAL E305

NOTES: SPECIAL HARDWARE PREPS LISTED IN THE FABRICATION NOTES MAY REQUIRE FIELD NOTCHING OF THE WALL, STUDS, AND/OR DRYWALL (i.e., ELECTRONIC POWER TRANSFERS, CONCEALED CLOSERS. IN SOME INSTANCES, THE ALUMINUM FRAMES THEMSELVES WILL NEED FIELD MODIFICATIONS TO ACCOMMODATE SPECIALTY HARDWARE REQUIREMENTS, AND ADDITIONAL COORDINATION WITH OTHER TRADES MAY BE REQUIRED PRIOR TO OR DURING INSTALLATION.

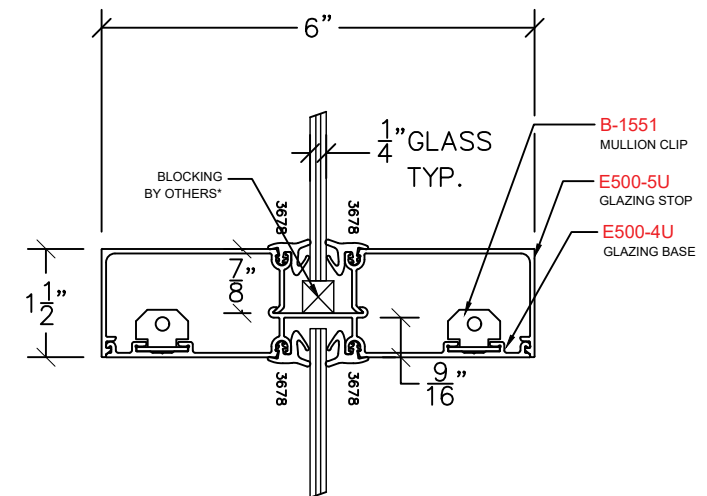
# EAGLE SECTION VIEWS



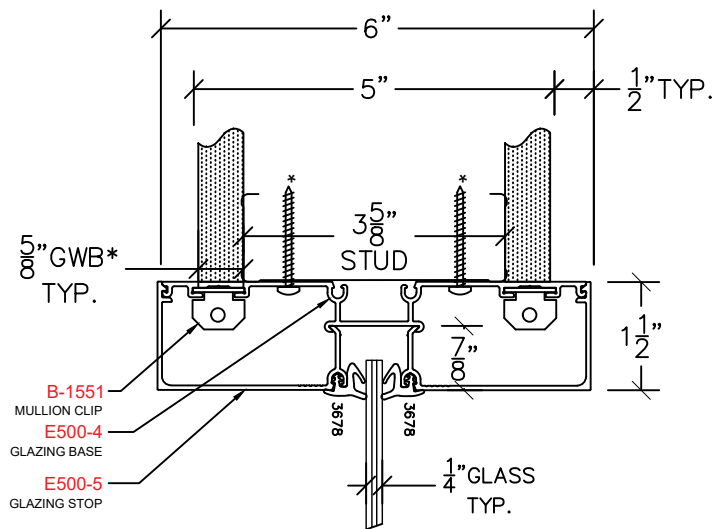
GLAZING HEAD E400



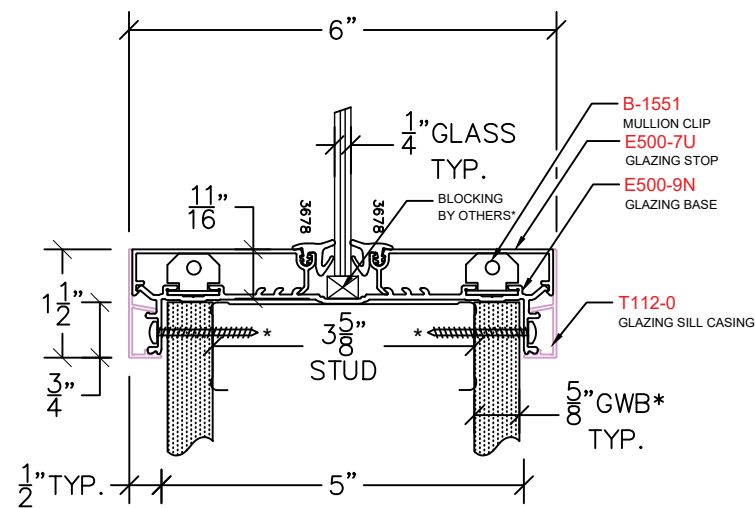
GLAZING SILL E420



GLAZING HORIZONTAL MULLION E424



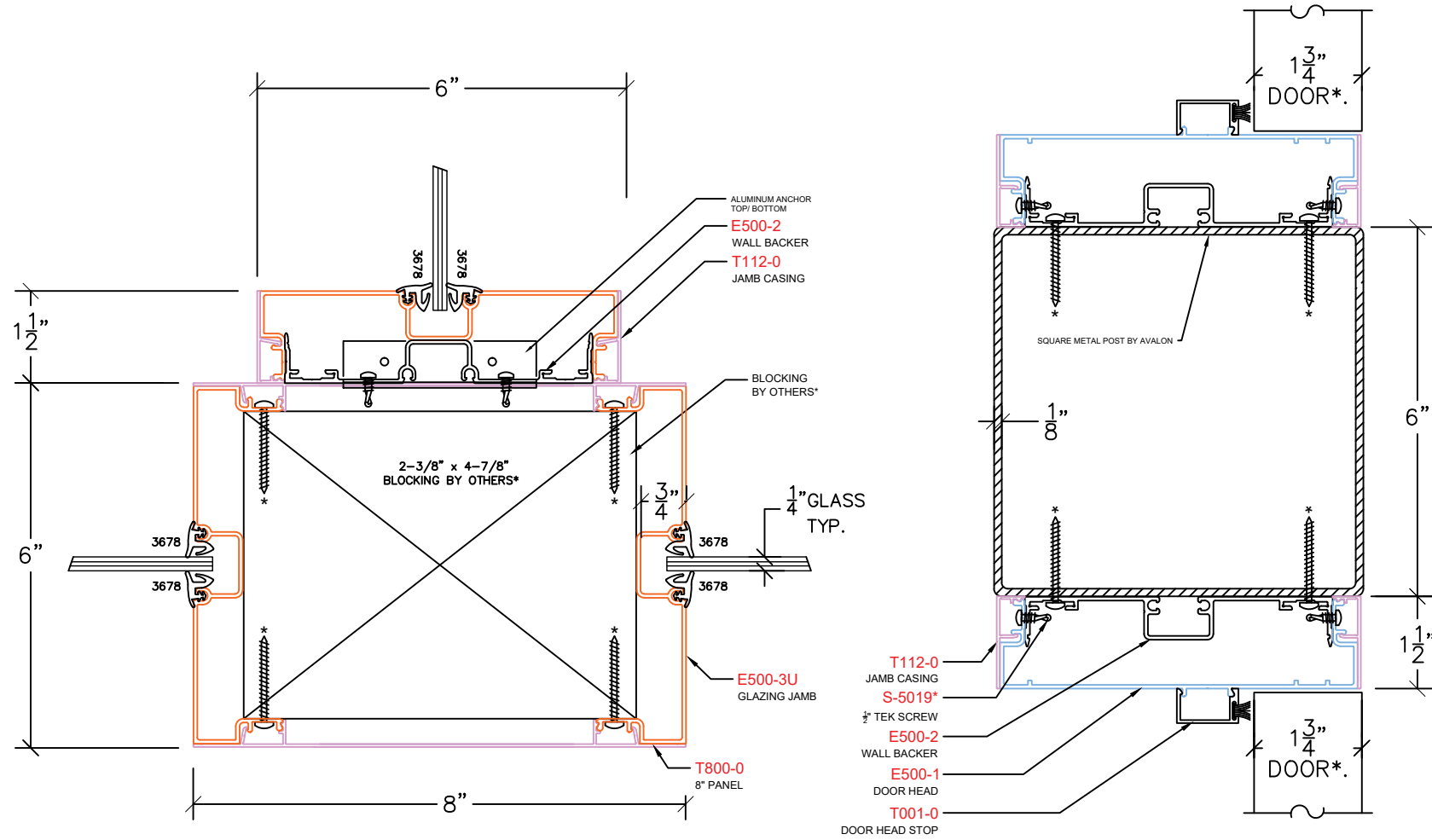
GLAZING HEAD E425



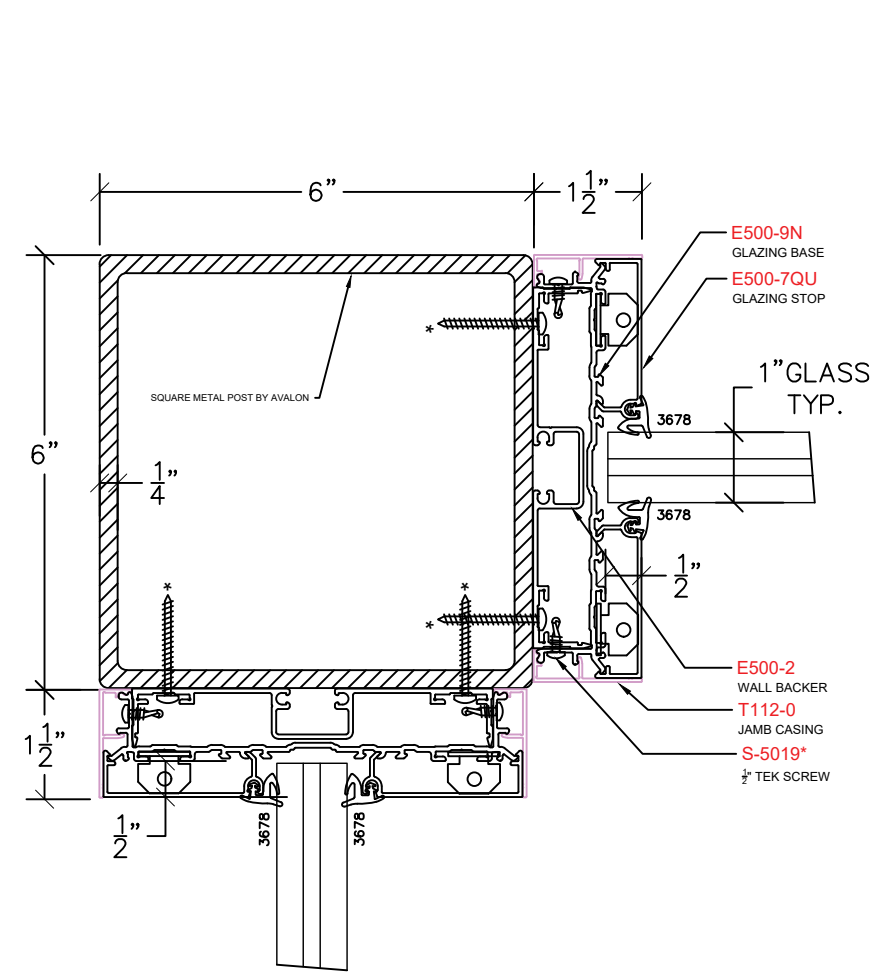
GLAZING SILL KNEEWALL E430

NOTES: SPECIAL HARDWARE PREPS LISTED IN THE FABRICATION NOTES MAY REQUIRE FIELD NOTCHING OF THE WALL, STUDS, AND/OR DRYWALL (i.e., ELECTRONIC POWER TRANSFERS, CONCEALED CLOSERS). IN SOME INSTANCES, THE ALUMINUM FRAMES THEMSELVES WILL NEED FIELD MODIFICATIONS TO ACCOMMODATE SPECIALTY HARDWARE REQUIREMENTS, AND ADDITIONAL COORDINATION WITH OTHER TRADES MAY BE REQUIRED PRIOR TO OR DURING INSTALLATION.

# EAGLE SECTION VIEWS



GLAZING INTERMEDIATE VERTICAL 8" – TP8

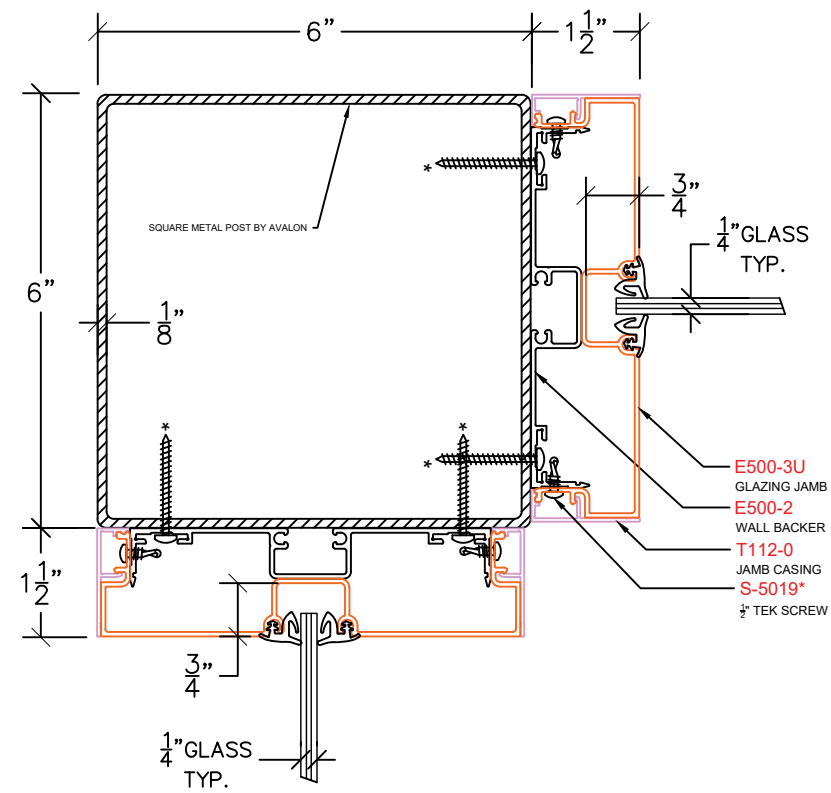


EC90 – 90 DEGREE CORNER GLAZING

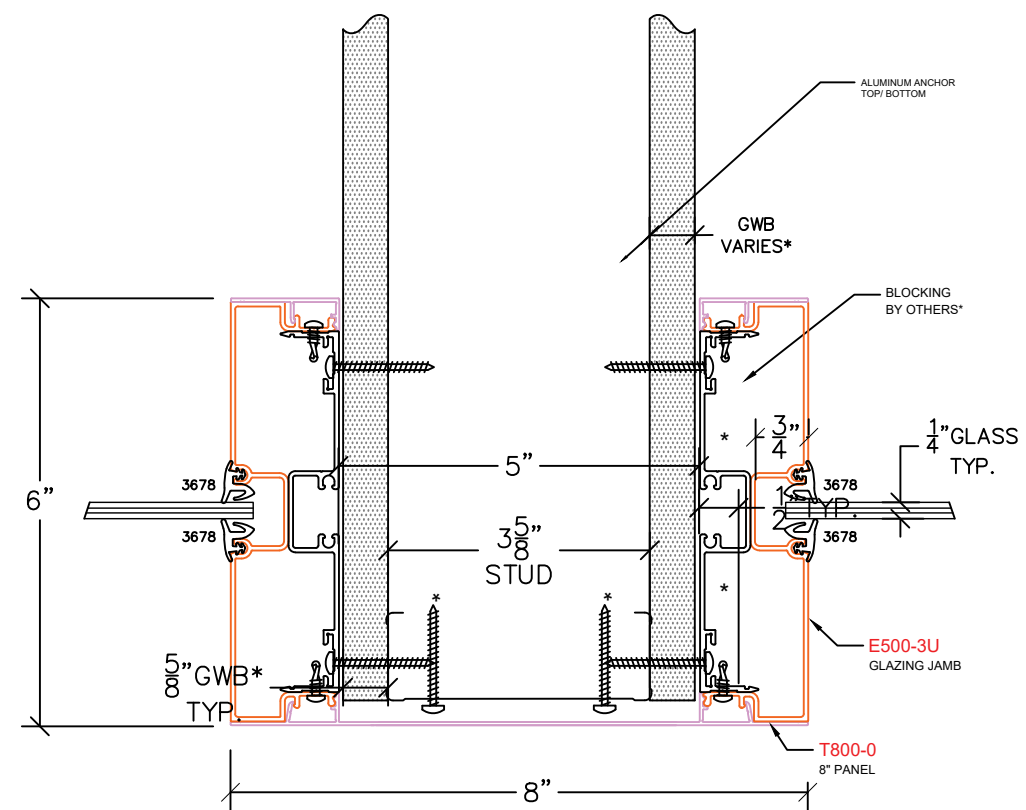
EC90 – 90 DEGREE CORNER GLAZING

NOTES: SPECIAL HARDWARE PREPS LISTED IN THE FABRICATION NOTES MAY REQUIRE FIELD NOTCHING OF THE WALL, STUDS, AND/OR DRYWALL (i.e., ELECTRONIC POWER TRANSFERS, CONCEALED CLOSERS). IN SOME INSTANCES, THE ALUMINUM FRAMES THEMSELVES WILL NEED FIELD MODIFICATIONS TO ACCOMMODATE SPECIALTY HARDWARE REQUIREMENTS, AND ADDITIONAL COORDINATION WITH OTHER TRADES MAY BE REQUIRED PRIOR TO OR DURING INSTALLATION.

# EAGLE SECTION VIEWS



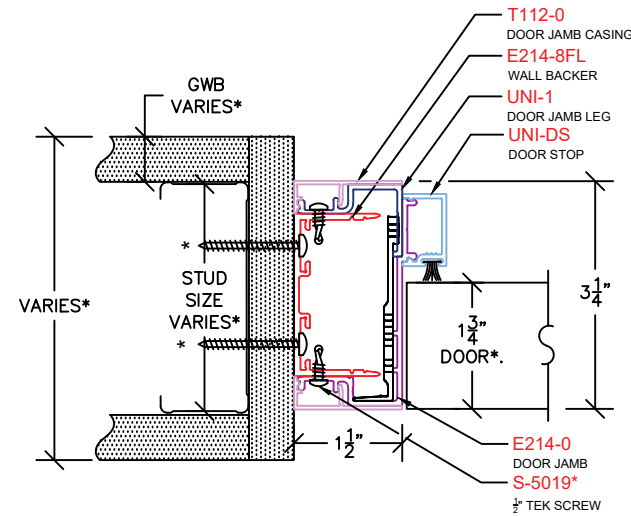
EC90 - 90 DEGREE CORNER GLAZING



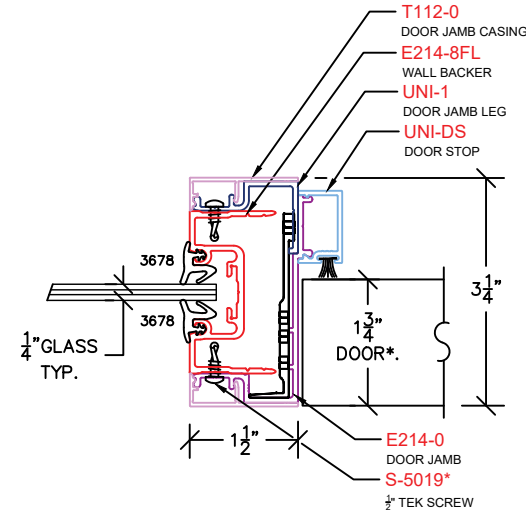
GLAZING INTERMEDIATE VERTICAL 8" - TP8

NOTES: SPECIAL HARDWARE PREPS LISTED IN THE FABRICATION NOTES MAY REQUIRE FIELD NOTCHING OF THE WALL, STUDS, AND/OR DRYWALL (i.e., ELECTRONIC POWER TRANSFERS, CONCEALED CLOSERS). IN SOME INSTANCES, THE ALUMINUM FRAMES THEMSELVES WILL NEED FIELD MODIFICATIONS TO ACCOMMODATE SPECIALTY HARDWARE REQUIREMENTS, AND ADDITIONAL COORDINATION WITH OTHER TRADES MAY BE REQUIRED PRIOR TO OR DURING INSTALLATION.

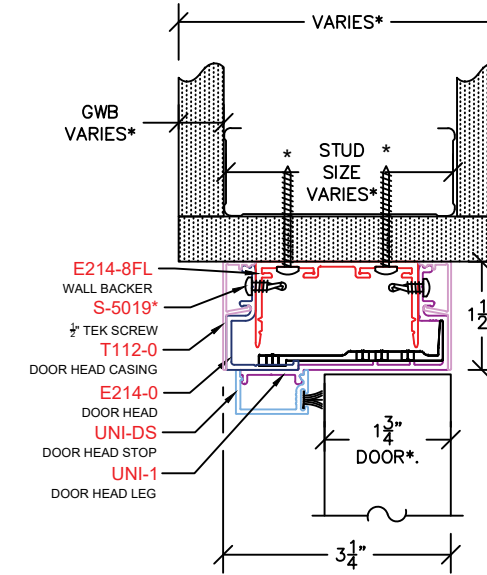
# 214 DEMOUNTED SECTION VIEWS



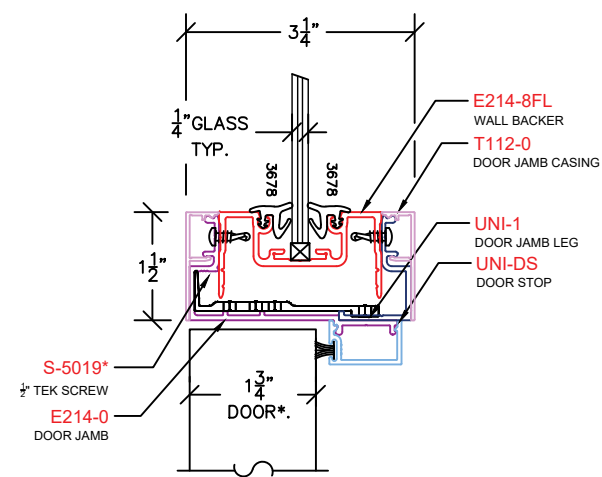
DOOR JAMB E108



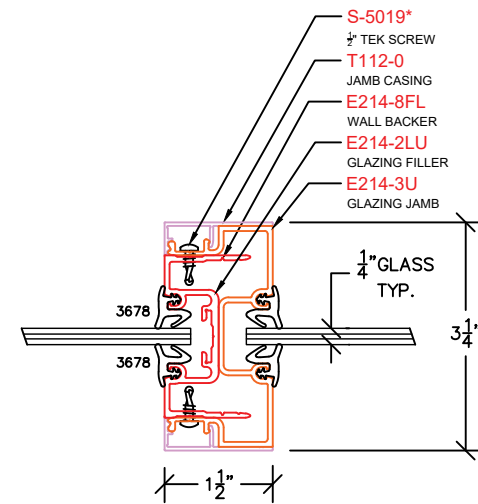
DOOR JAMB SIDELITE E150



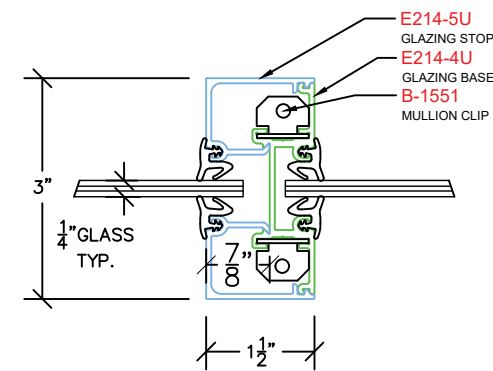
DOOR HEAD E208



DOOR HEAD TRANSOM E215



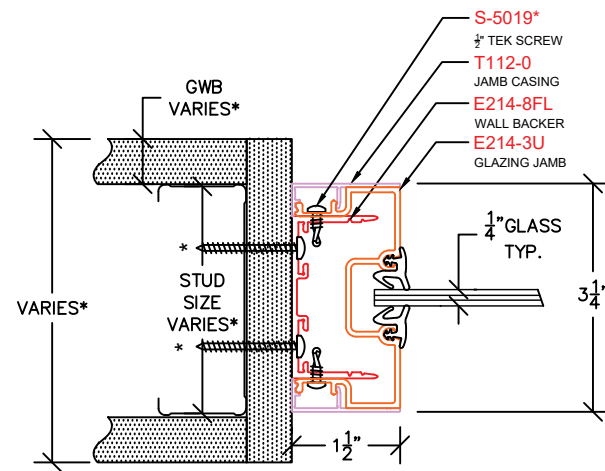
GLAZING INTERMEDIATE VERTICAL E303



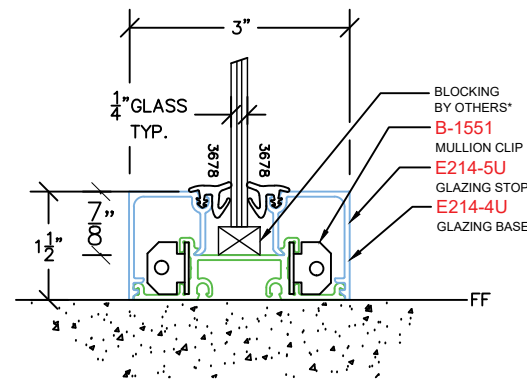
GLAZING INTERMEDIATE VERTICAL E305

NOTES: SPECIAL HARDWARE PREPS LISTED IN THE FABRICATION NOTES MAY REQUIRE FIELD NOTCHING OF THE WALL, STUDS, AND/OR DRYWALL (i.e., ELECTRONIC POWER TRANSFERS, CONCEALED CLOSERS. IN SOME INSTANCES, THE ALUMINUM FRAMES THEMSELVES WILL NEED FIELD MODIFICATIONS TO ACCOMMODATE SPECIALTY HARDWARE REQUIREMENTS, AND ADDITIONAL COORDINATION WITH OTHER TRADES MAY BE REQUIRED PRIOR TO OR DURING INSTALLATION.

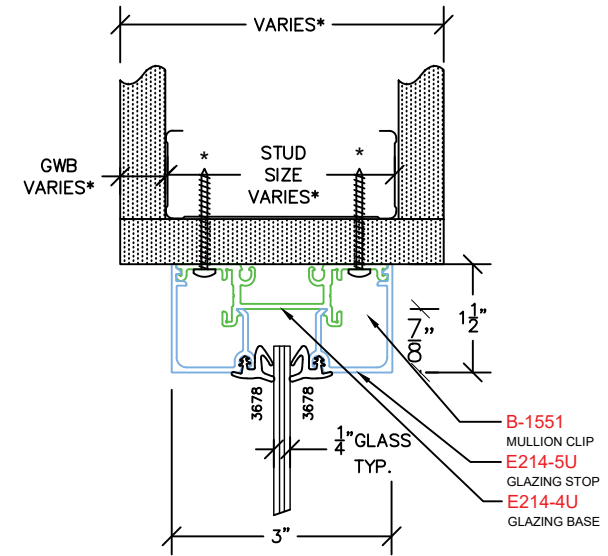
# 214 DEMOUNTED SECTION VIEWS



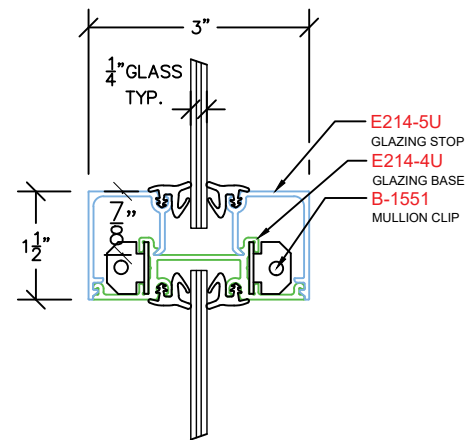
GLAZING JAMB E308



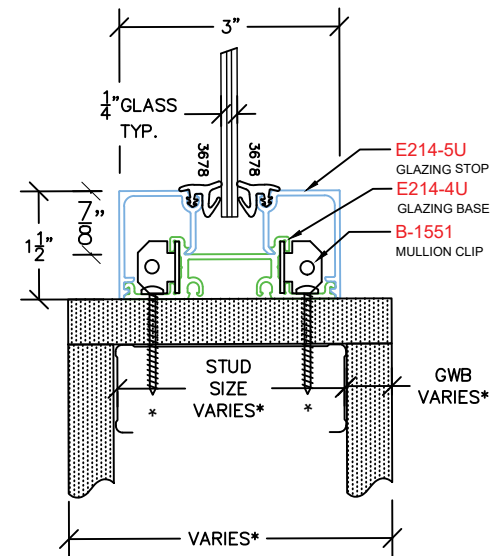
GLAZING SILL E420



GLAZING HEAD E425



GLAZING HORIZONTAL MULLION E424



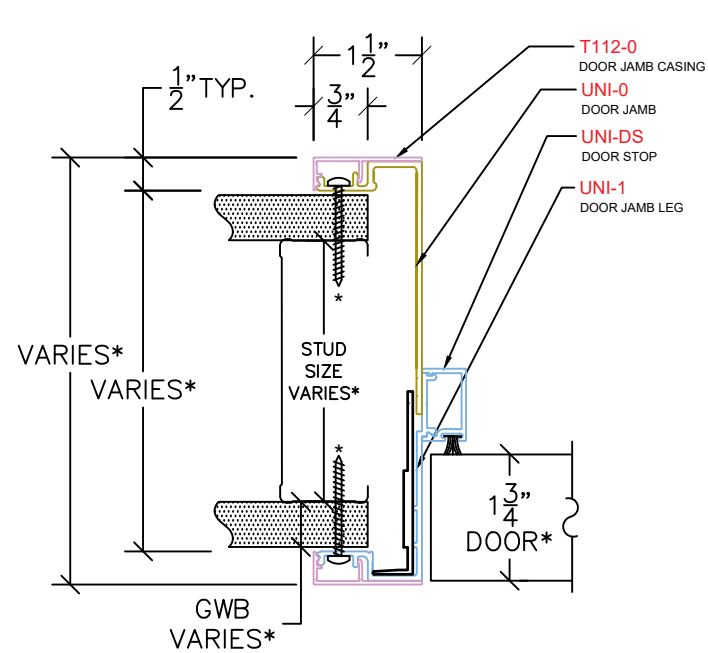
GLAZING SILL E438

NOTES: SPECIAL HARDWARE PREPS LISTED IN THE FABRICATION NOTES MAY REQUIRE FIELD NOTCHING OF THE WALL, STUDS, AND/OR DRYWALL (i.e., ELECTRONIC POWER TRANSFERS, CONCEALED CLOSERS). IN SOME INSTANCES, THE ALUMINUM FRAMES THEMSELVES WILL NEED FIELD MODIFICATIONS TO ACCOMMODATE SPECIALTY HARDWARE REQUIREMENTS, AND ADDITIONAL COORDINATION WITH OTHER TRADES MAY BE REQUIRED PRIOR TO OR DURING INSTALLATION.

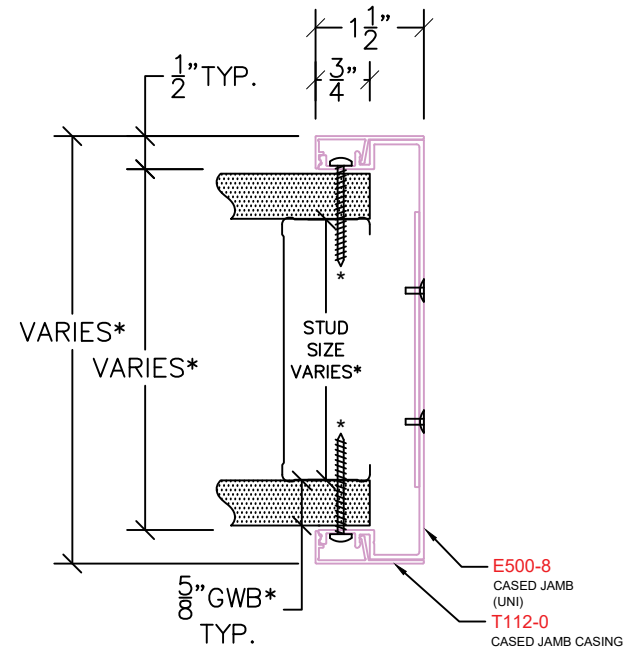


# UNIVERSAL SECTION VIEWS

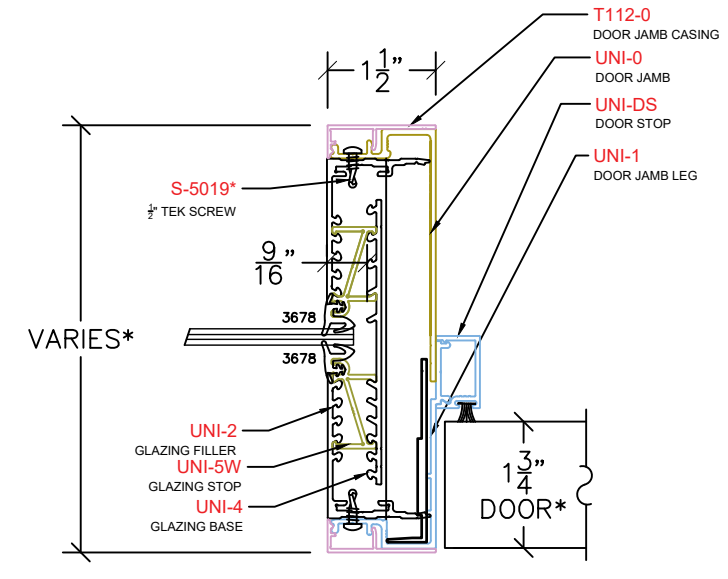
Pat. No. US 10,871,024 B2  
THROAT SIZE VARIES\*



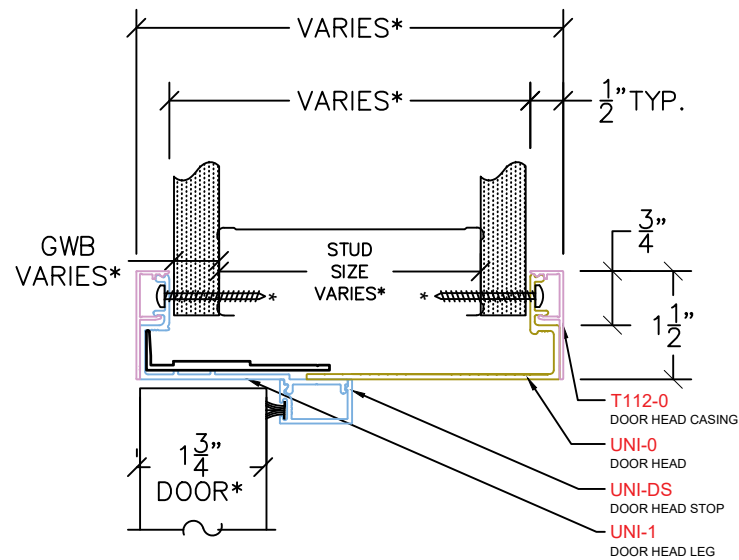
DOOR JAMB U100



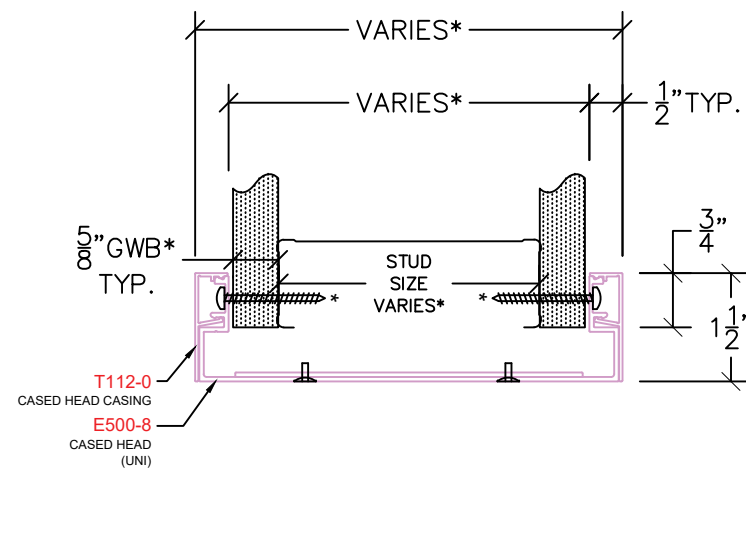
CASED JAMB U140



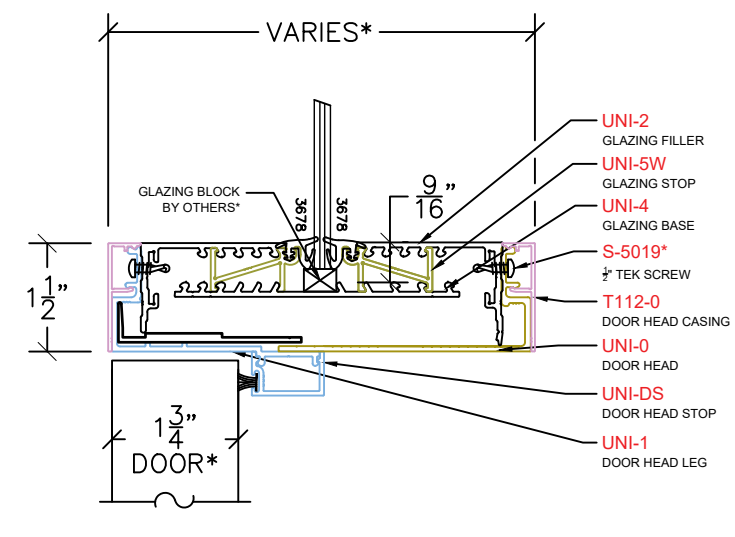
DOOR JAMB SIDELIGHT U150



DOOR HEAD U200



CASED HEAD U214



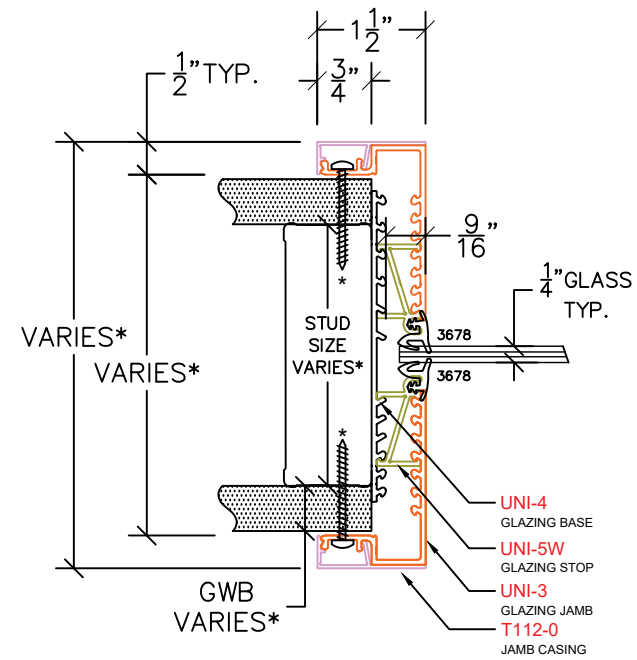
DOOR HEAD TRANSOM U215

NOTES: SPECIAL HARDWARE PREPS LISTED IN THE FABRICATION NOTES MAY REQUIRE FIELD NOTCHING OF THE WALL, STUDS, AND/OR DRYWALL (i.e., ELECTRONIC POWER TRANSFERS, CONCEALED CLOSERS). IN SOME INSTANCES, THE ALUMINUM FRAMES THEMSELVES WILL NEED FIELD MODIFICATIONS TO ACCOMMODATE SPECIALTY HARDWARE REQUIREMENTS, AND ADDITIONAL COORDINATION WITH OTHER TRADES MAY BE REQUIRED PRIOR TO OR DURING INSTALLATION.

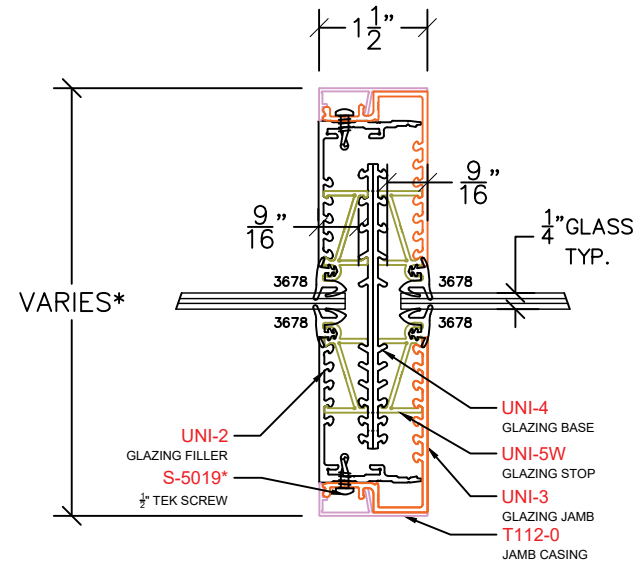


# UNIVERSAL SECTION VIEWS

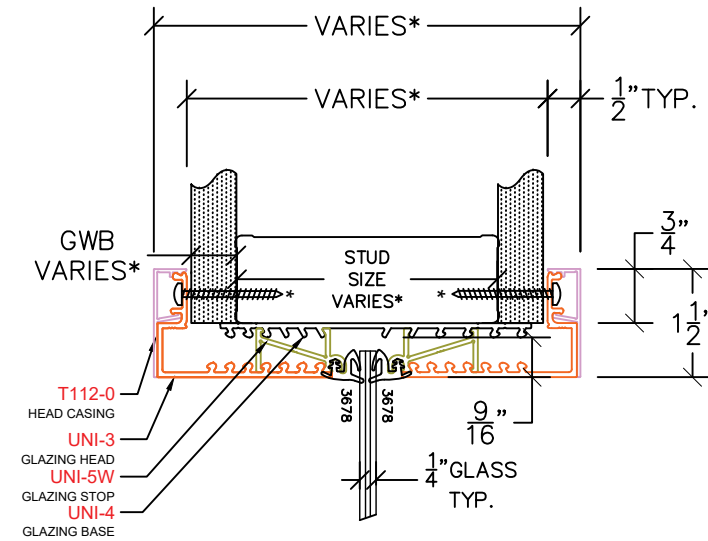
Pat. No. US 10,871,024 B2  
THROAT SIZE VARIES\*



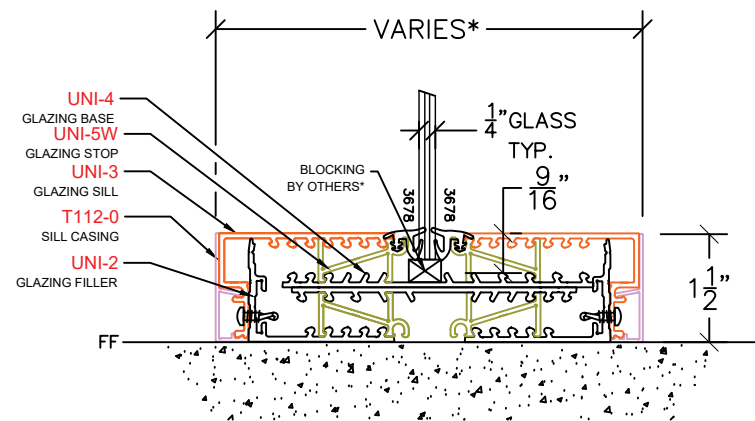
DOOR JAMB U300



GLAZING VERTICAL MULLION U303



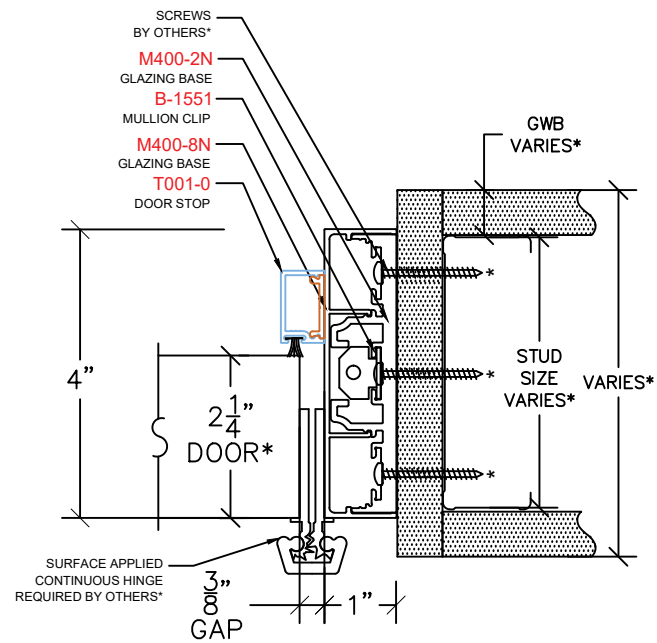
GLAZING HEAD U400



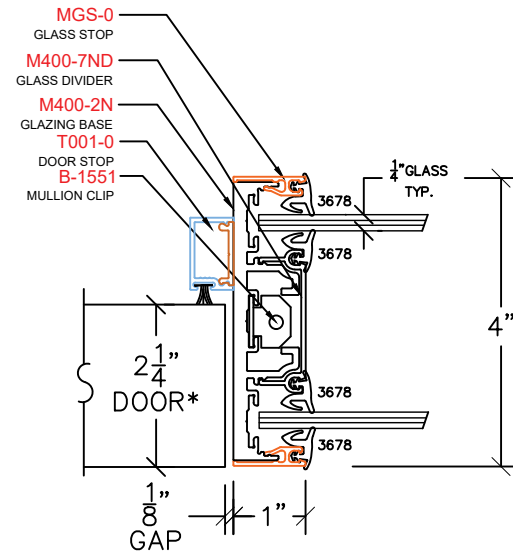
GLAZING SILL U420

NOTES: SPECIAL HARDWARE PREPS LISTED IN THE FABRICATION NOTES MAY REQUIRE FIELD NOTCHING OF THE WALL, STUDS, AND/OR DRYWALL (i.e., ELECTRONIC POWER TRANSFERS, CONCEALED CLOSERS). IN SOME INSTANCES, THE ALUMINUM FRAMES THEMSELVES WILL NEED FIELD MODIFICATIONS TO ACCOMMODATE SPECIALTY HARDWARE REQUIREMENTS, AND ADDITIONAL COORDINATION WITH OTHER TRADES MAY BE REQUIRED PRIOR TO OR DURING INSTALLATION.

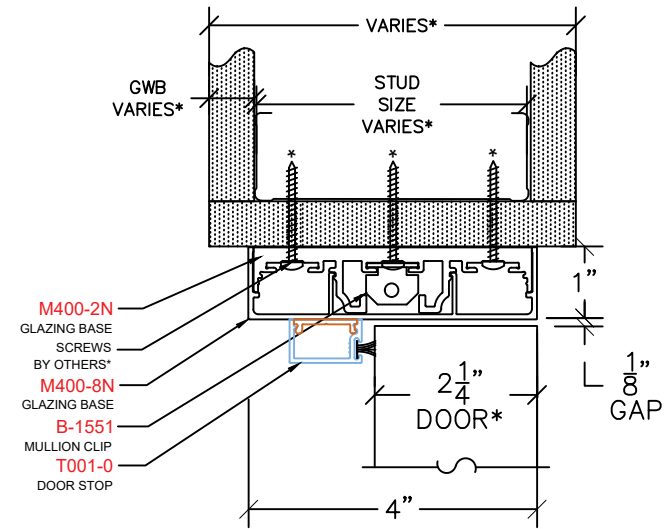
# MIMUS SECTION VIEWS



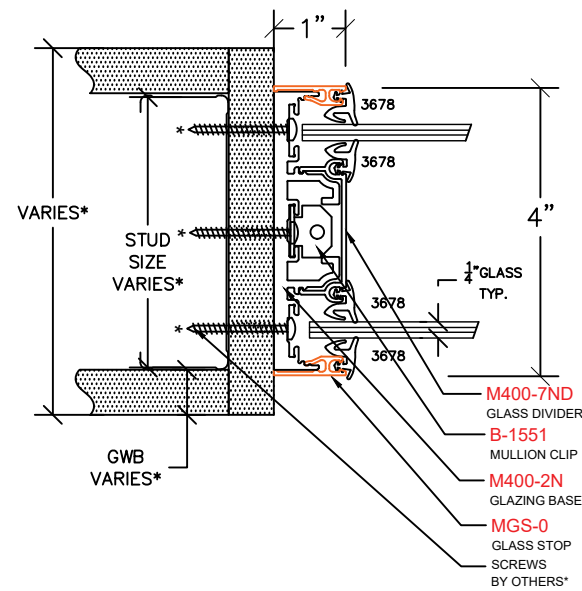
DOOR JAMB M100



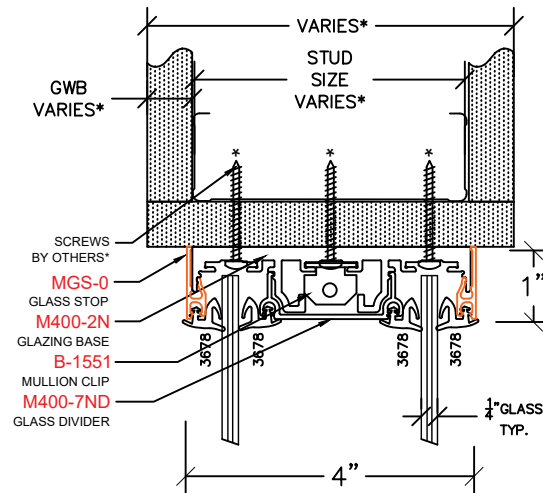
DOOR JAMB SIDELITE M150



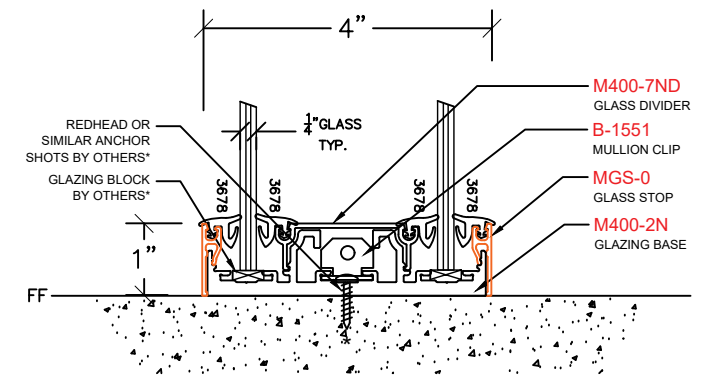
DOOR JAMB M200



GLAZING JAMB M300



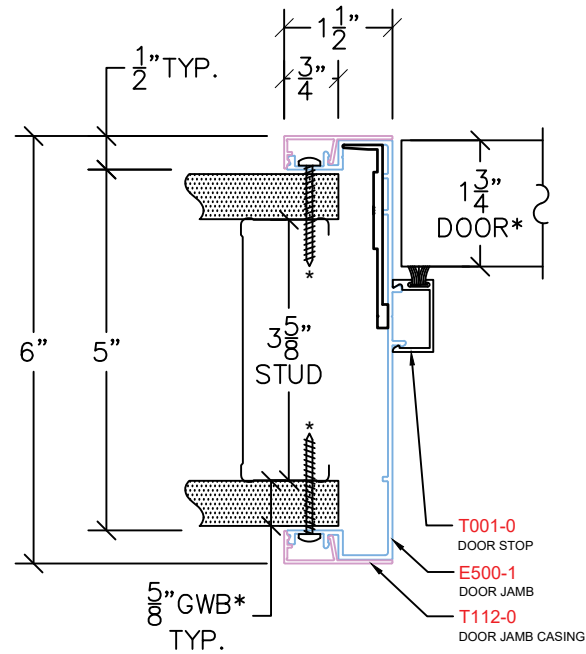
GLAZING HEAD M400



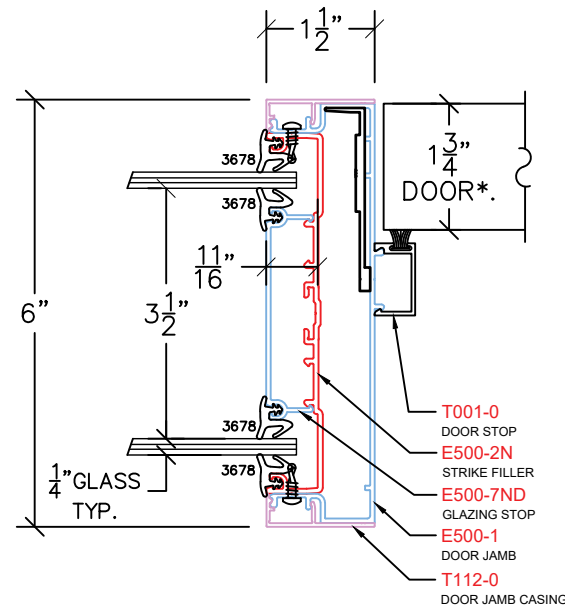
GLAZING SILL M420

NOTES: SPECIAL HARDWARE PREPS LISTED IN THE FABRICATION NOTES MAY REQUIRE FIELD NOTCHING OF THE WALL, STUDS, AND/OR DRYWALL (i.e., ELECTRONIC POWER TRANSFERS, CONCEALED CLOSERS). IN SOME INSTANCES, THE ALUMINUM FRAMES THEMSELVES WILL NEED FIELD MODIFICATIONS TO ACCOMMODATE SPECIALTY HARDWARE REQUIREMENTS, AND ADDITIONAL COORDINATION WITH OTHER TRADES MAY BE REQUIRED PRIOR TO OR DURING INSTALLATION.

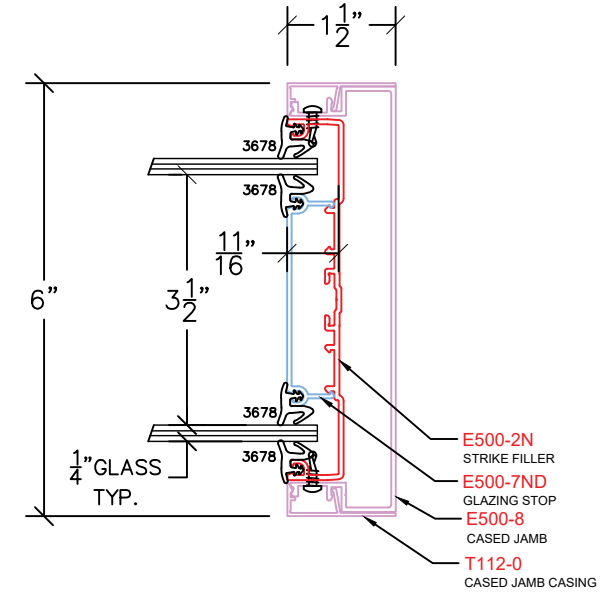
# TACITUS SECTION VIEWS



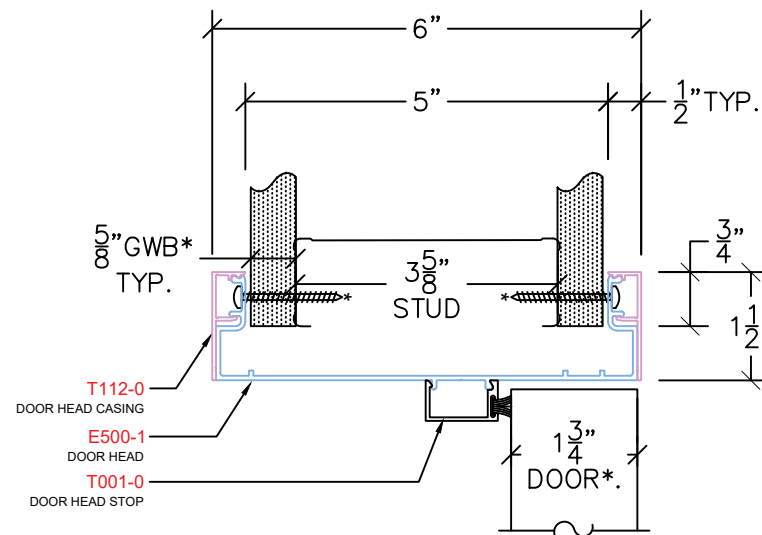
DOOR JAMB T100



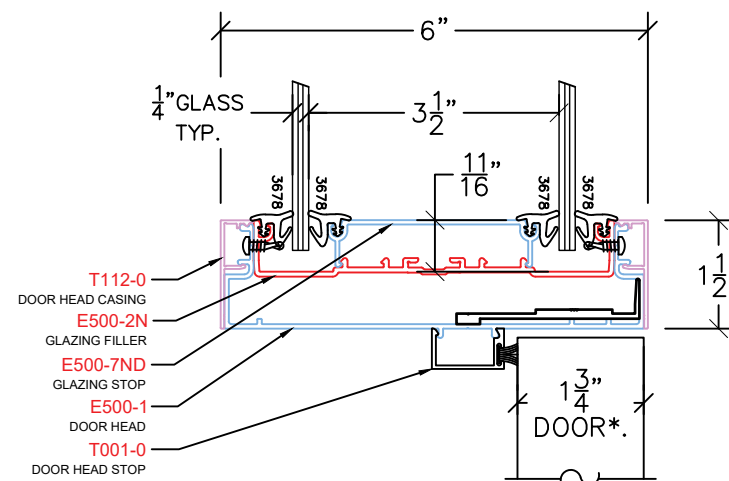
DOOR JAMB SIDELIGHT T150



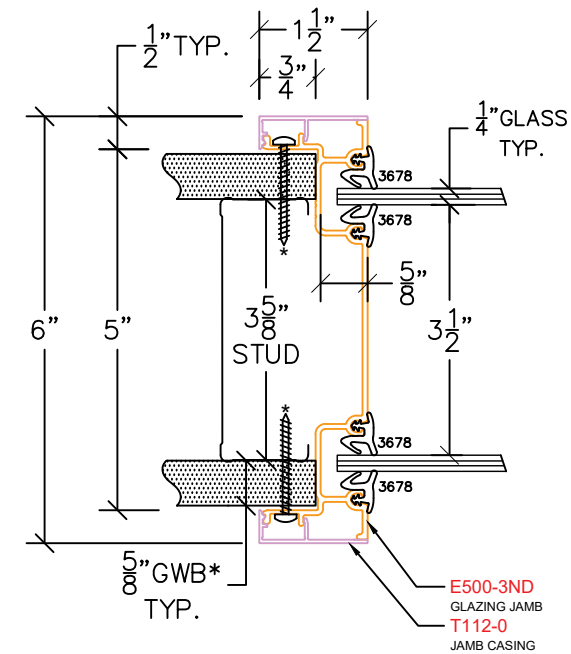
CASED JAMB SIDELIGHT E155



DOOR HEAD T200



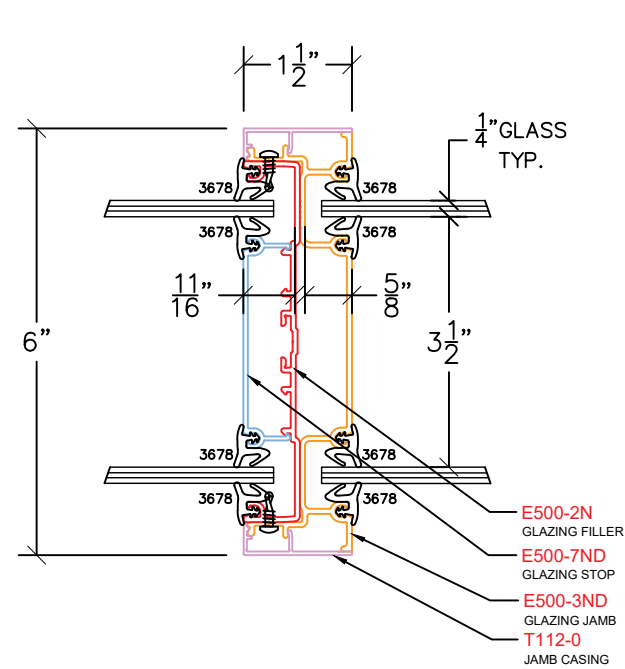
DOOR HEAD TRANSOM T215



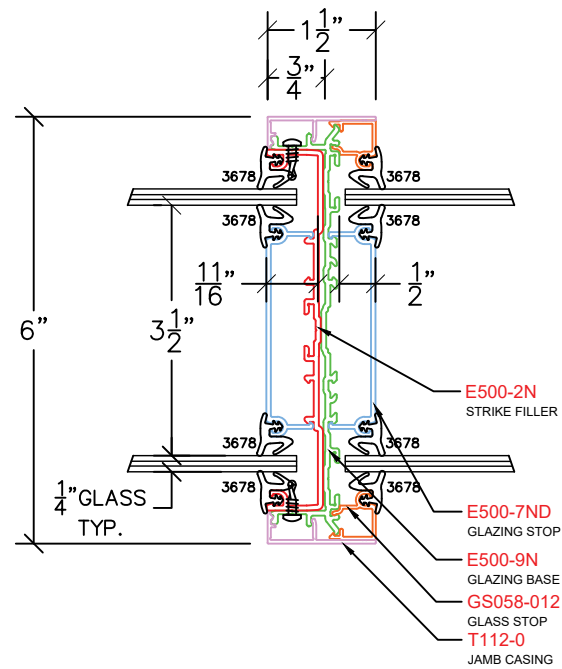
GLAZING JAMB T300

NOTES: SPECIAL HARDWARE PREPS LISTED IN THE FABRICATION NOTES MAY REQUIRE FIELD NOTCHING OF THE WALL, STUDS, AND/OR DRYWALL (i.e., ELECTRONIC POWER TRANSFERS, CONCEALED CLOSERS). IN SOME INSTANCES, THE ALUMINUM FRAMES THEMSELVES WILL NEED FIELD MODIFICATIONS TO ACCOMMODATE SPECIALTY HARDWARE REQUIREMENTS, AND ADDITIONAL COORDINATION WITH OTHER TRADES MAY BE REQUIRED PRIOR TO OR DURING INSTALLATION.

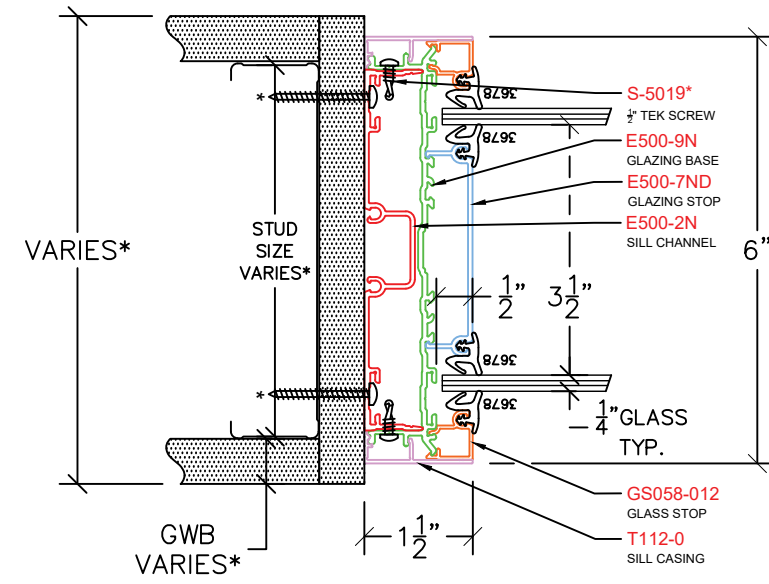
# TACITUS SECTION VIEWS



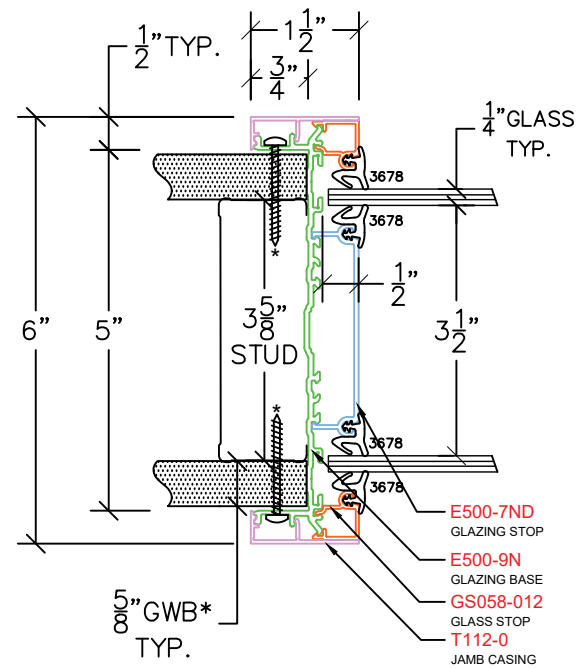
GLAZING VERTICAL MULLION T303



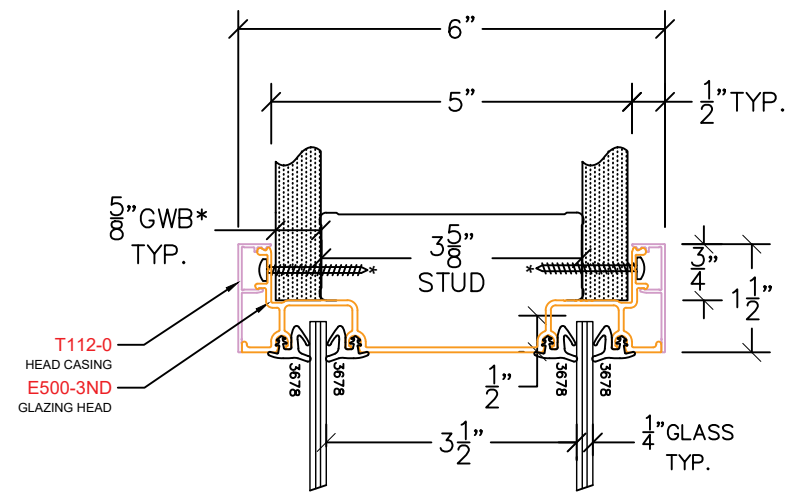
GLAZING VERTICAL MULLION T307



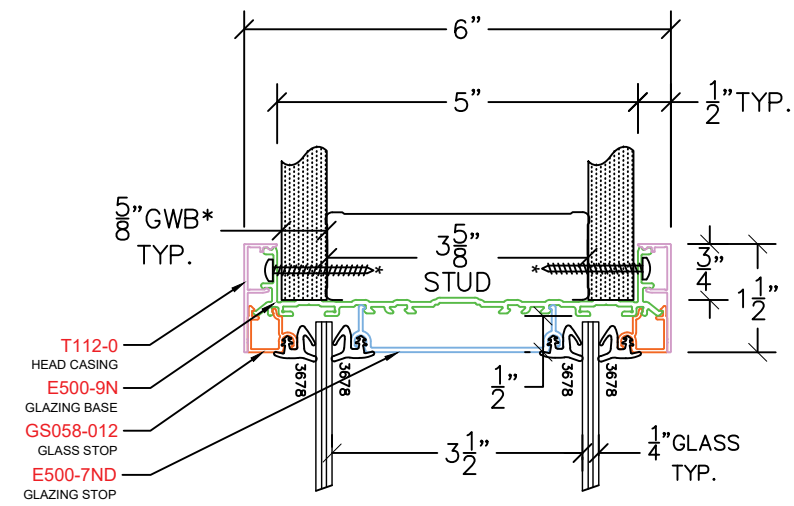
GLAZING JAMB T308



GLAZING JAMB T309



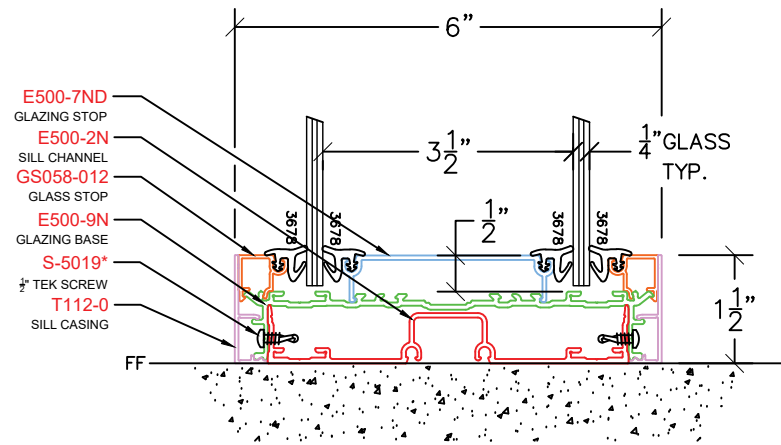
GLAZING HEAD T400



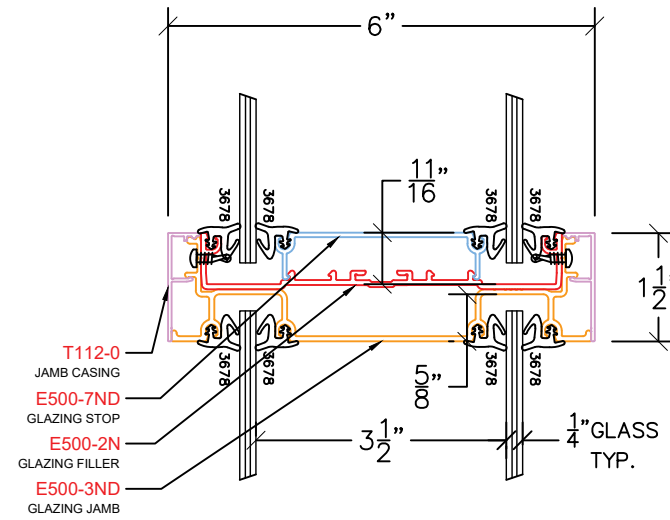
GLAZING HEAD T409

NOTES: SPECIAL HARDWARE PREPS LISTED IN THE FABRICATION NOTES MAY REQUIRE FIELD NOTCHING OF THE WALL, STUDS, AND/OR DRYWALL (i.e., ELECTRONIC POWER TRANSFERS, CONCEALED CLOSERS). IN SOME INSTANCES, THE ALUMINUM FRAMES THEMSELVES WILL NEED FIELD MODIFICATIONS TO ACCOMMODATE SPECIALTY HARDWARE REQUIREMENTS, AND ADDITIONAL COORDINATION WITH OTHER TRADES MAY BE REQUIRED PRIOR TO OR DURING INSTALLATION.

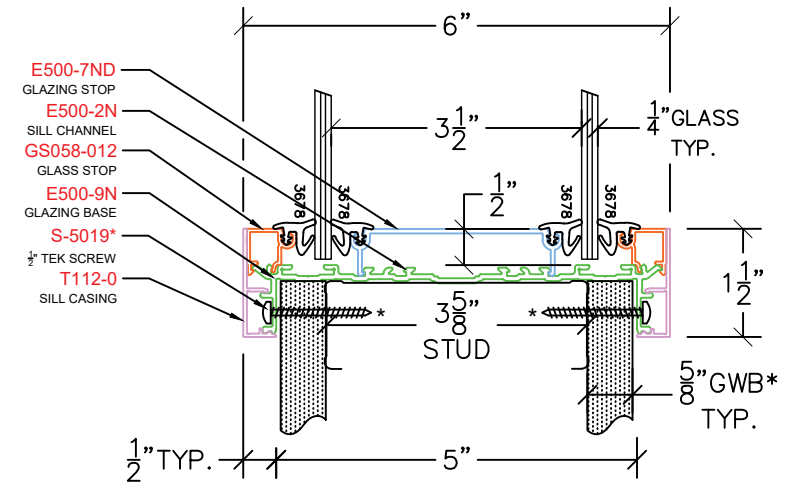
# TACITUS SECTION VIEWS



GLAZING SILL T420



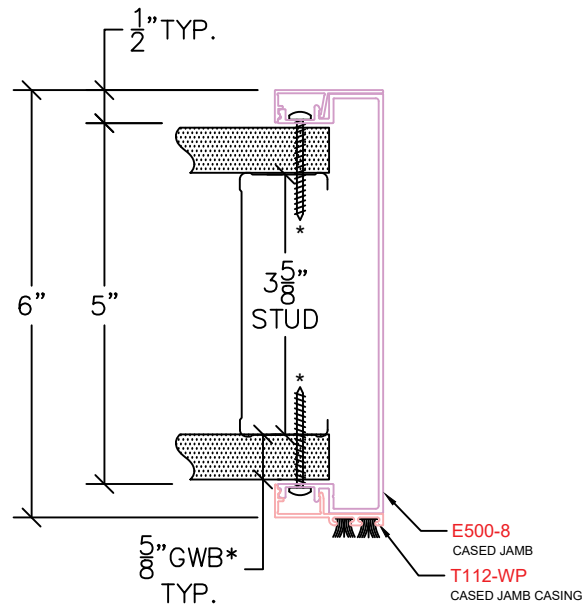
GLAZING HORIZONTAL MULLION T423



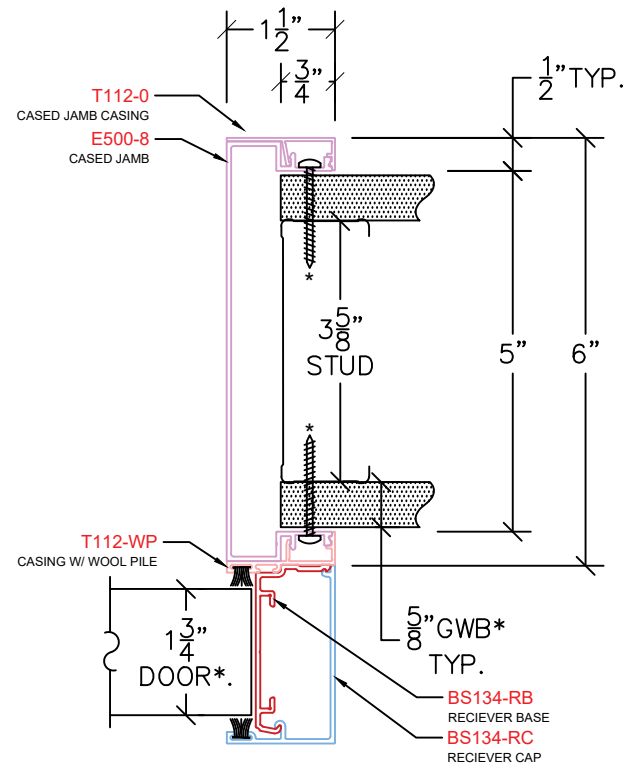
GLAZING SILL KNEEWALL T430

NOTES: SPECIAL HARDWARE PREPS LISTED IN THE FABRICATION NOTES MAY REQUIRE FIELD NOTCHING OF THE WALL, STUDS, AND/OR DRYWALL(i.e., ELECTRONIC POWER TRANSFERS, CONCEALED CLOSERS. IN SOME INSTANCES, THE ALUMINUM FRAMES THEMSELVES WILL NEED FIELD MODIFICATIONS TO ACCOMMODATE SPECIALTY HARDWARE REQUIREMENTS, AND ADDITIONAL COORDINATION WITH OTHER TRADES MAY BE REQUIRED PRIOR TO OR DURING INSTALLATION.

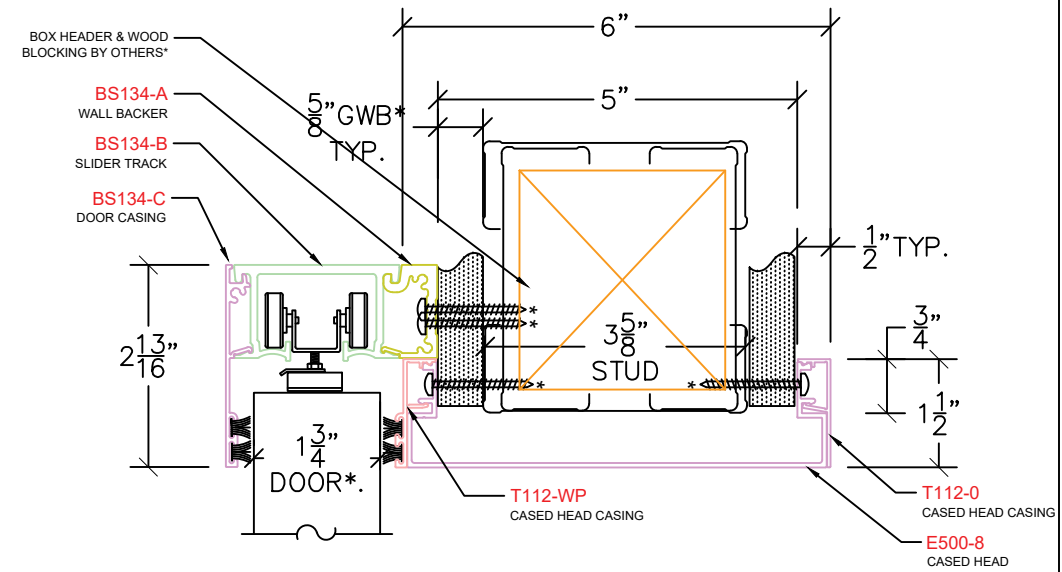
# BARN DOOR SLIDER SECTION VIEWS - EAGLE



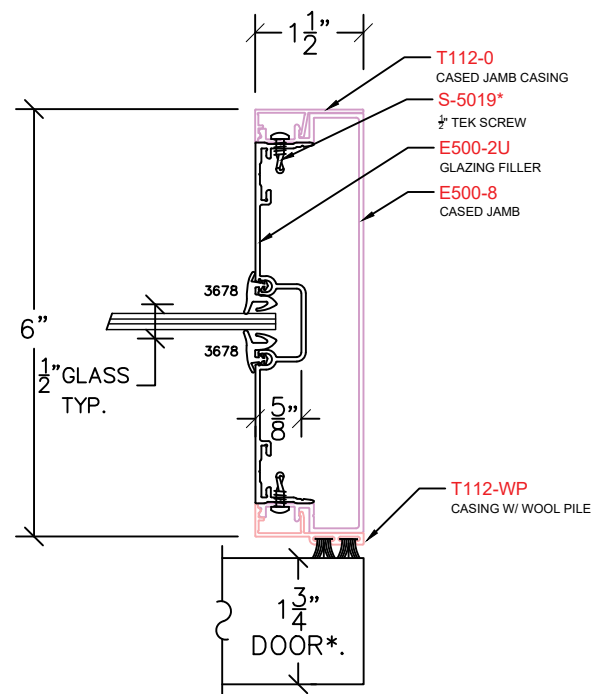
CASED JAMB E140



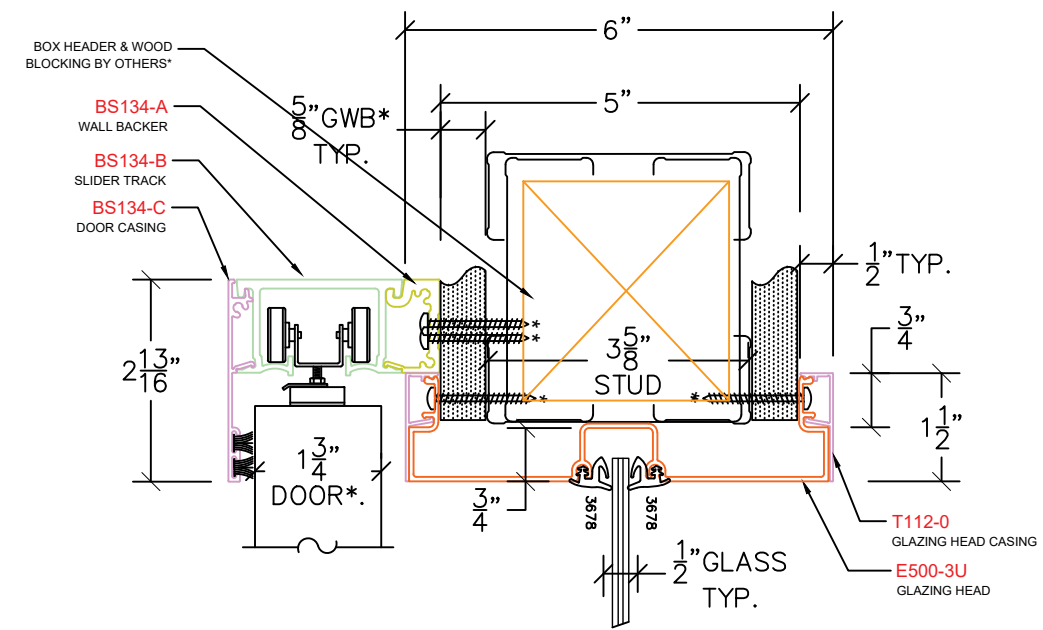
CASED JAMB W/ RECEIVER E140R



CASED HEAD E214



CASED JAMB E155

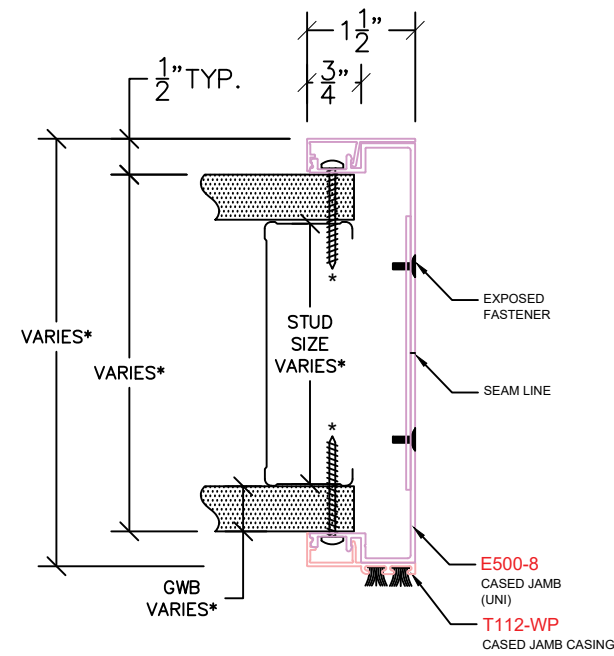


GLAZING HEAD E414

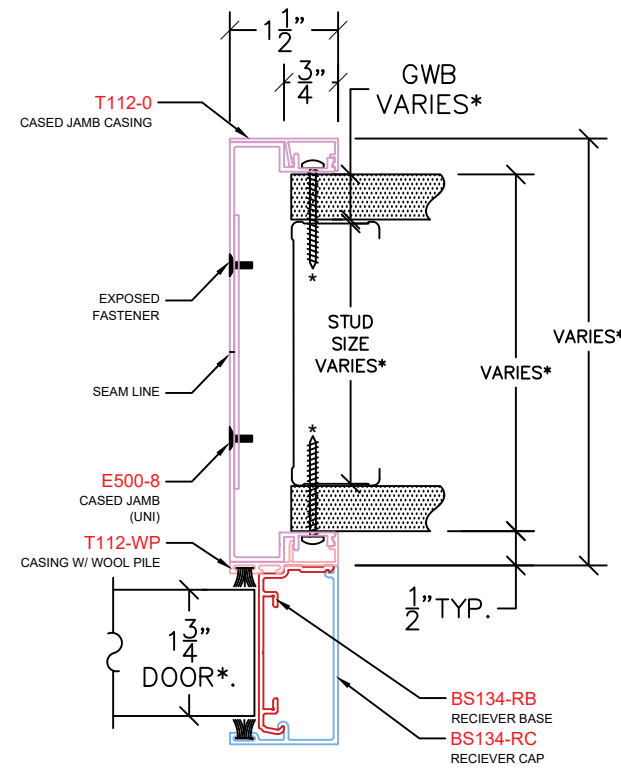
NOTES: SPECIAL HARDWARE PREPS LISTED IN THE FABRICATION NOTES MAY REQUIRE FIELD NOTCHING OF THE WALL, STUDS, AND/OR DRYWALL (i.e., ELECTRONIC POWER TRANSFERS, CONCEALED CLOSERS). IN SOME INSTANCES, THE ALUMINUM FRAMES THEMSELVES WILL NEED FIELD MODIFICATIONS TO ACCOMMODATE SPECIALTY HARDWARE REQUIREMENTS, AND ADDITIONAL COORDINATION WITH OTHER TRADES MAY BE REQUIRED PRIOR TO OR DURING INSTALLATION.



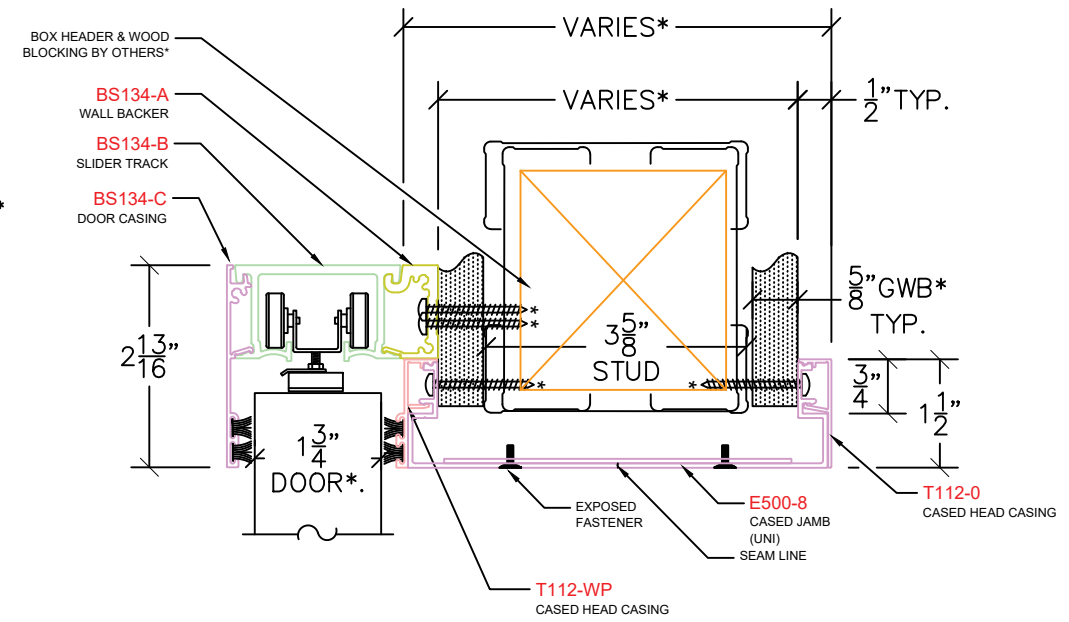
# BARN DOOR SLIDER SECTION VIEWS - UNIVERSAL



CASED JAMB U140



CASED JAMB W/ RECIEVER U140R

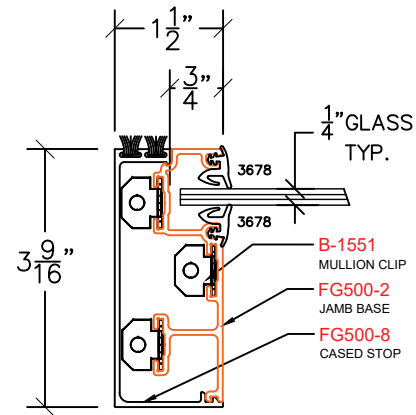


CASED HEAD U214

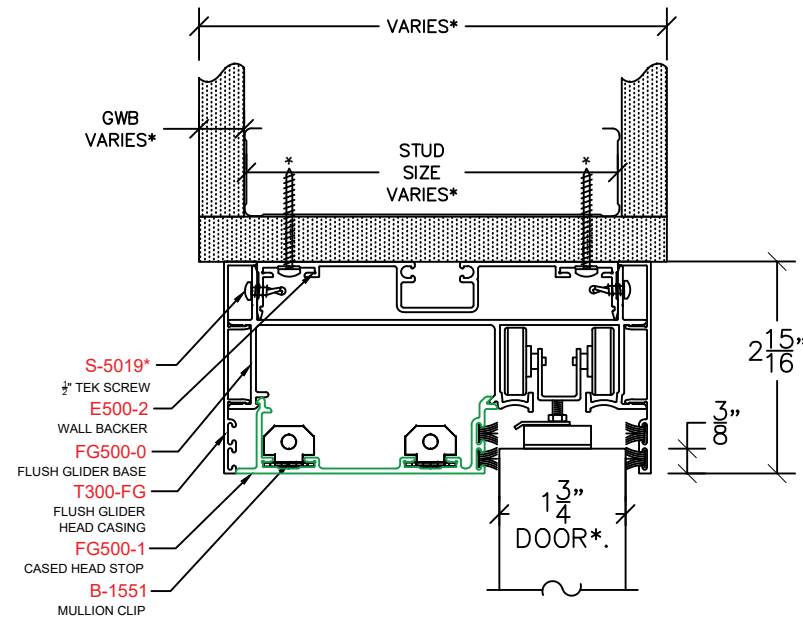
NOTES: SPECIAL HARDWARE PREPS LISTED IN THE FABRICATION NOTES MAY REQUIRE FIELD NOTCHING OF THE WALL, STUDS, AND/OR DRYWALL(i.e., ELECTRONIC POWER TRANSFERS, CONCEALED CLOSERS. IN SOME INSTANCES, THE ALUMINUM FRAMES THEMSELVES WILL NEED FIELD MODIFICATIONS TO ACCOMMODATE SPECIALTY HARDWARE REQUIREMENTS, AND ADDITIONAL COORDINATION WITH OTHER TRADES MAY BE REQUIRED PRIOR TO OR DURING INSTALLATION.



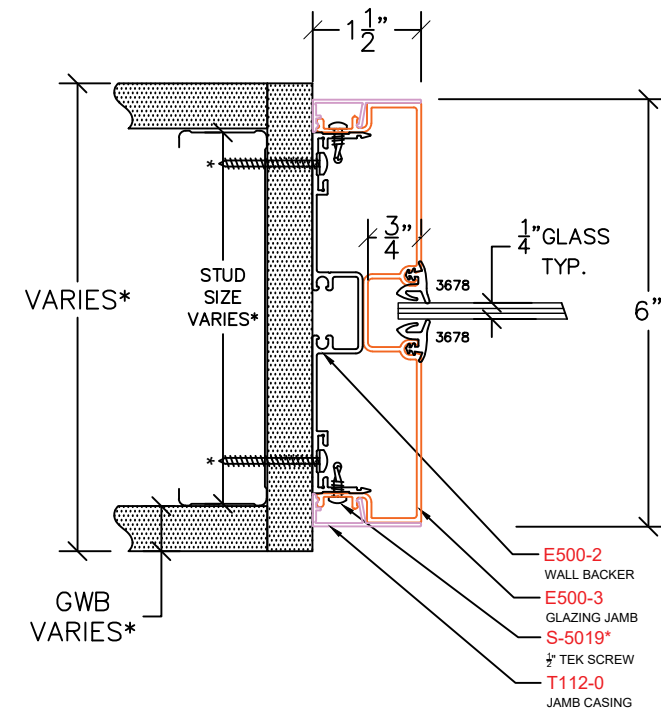
# FLUSH GLIDER SECTION VIEWS - BUTT GLAZE



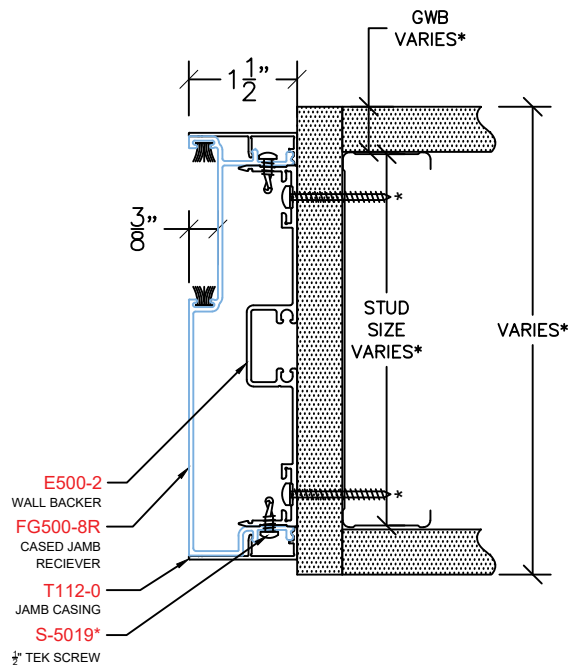
FG150 – FLUSH GLIDER @  
CASED VERTICAL MULLION



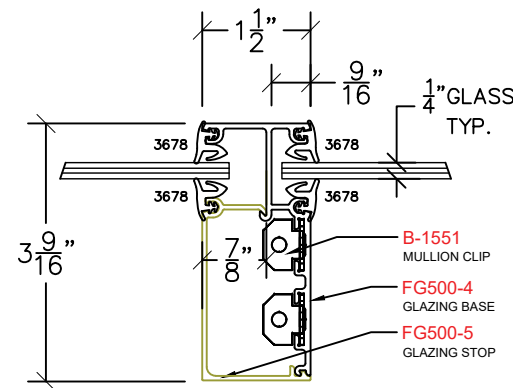
FG208 – FLUSH GLIDER DOOR HEAD



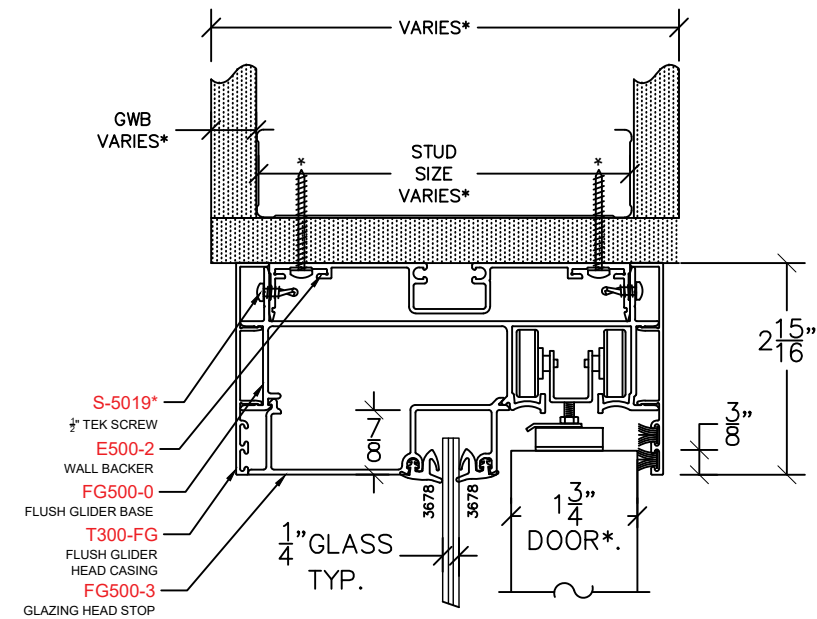
GLAZING JAMB E308



FG108R – FLUSH GLIDER CASED  
RECEIVER AT WALL JAMB



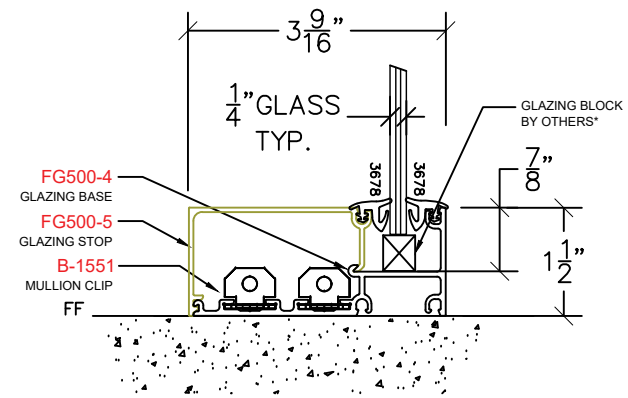
FG305 – FLUSH GLIDER @  
GLAZED VERTICAL MULLION



FG408 – FLUSH GLIDER GLAZING HEAD

NOTES: SPECIAL HARDWARE PREPS LISTED IN THE FABRICATION NOTES MAY REQUIRE FIELD NOTCHING OF THE WALL, STUDS, AND/OR DRYWALL (i.e., ELECTRONIC POWER TRANSFERS, CONCEALED CLOSERS). IN SOME INSTANCES, THE ALUMINUM FRAMES THEMSELVES WILL NEED FIELD MODIFICATIONS TO ACCOMMODATE SPECIALTY HARDWARE REQUIREMENTS, AND ADDITIONAL COORDINATION WITH OTHER TRADES MAY BE REQUIRED PRIOR TO OR DURING INSTALLATION.

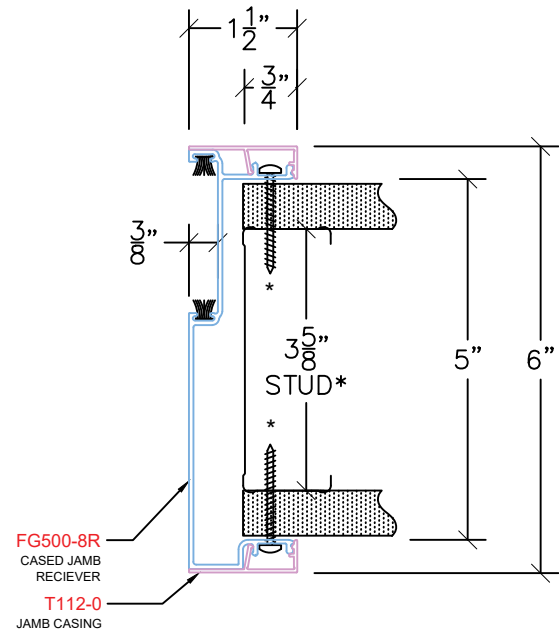
# FLUSH GLIDER SECTION VIEWS - BUTT GLAZE



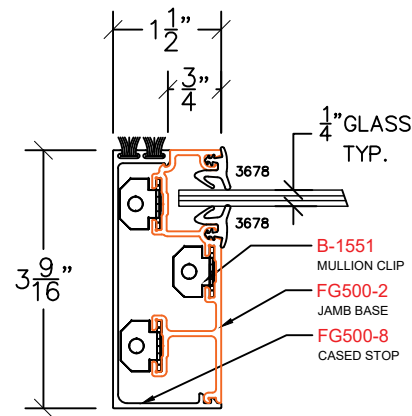
FG420 - FLUSH GLIDER @ SILL

NOTES: SPECIAL HARDWARE PREPS LISTED IN THE FABRICATION NOTES MAY REQUIRE FIELD NOTCHING OF THE WALL, STUDS, AND/OR DRYWALL (i.e., ELECTRONIC POWER TRANSFERS, CONCEALED CLOSERS). IN SOME INSTANCES, THE ALUMINUM FRAMES THEMSELVES WILL NEED FIELD MODIFICATIONS TO ACCOMMODATE SPECIALTY HARDWARE REQUIREMENTS, AND ADDITIONAL COORDINATION WITH OTHER TRADES MAY BE REQUIRED PRIOR TO OR DURING INSTALLATION.

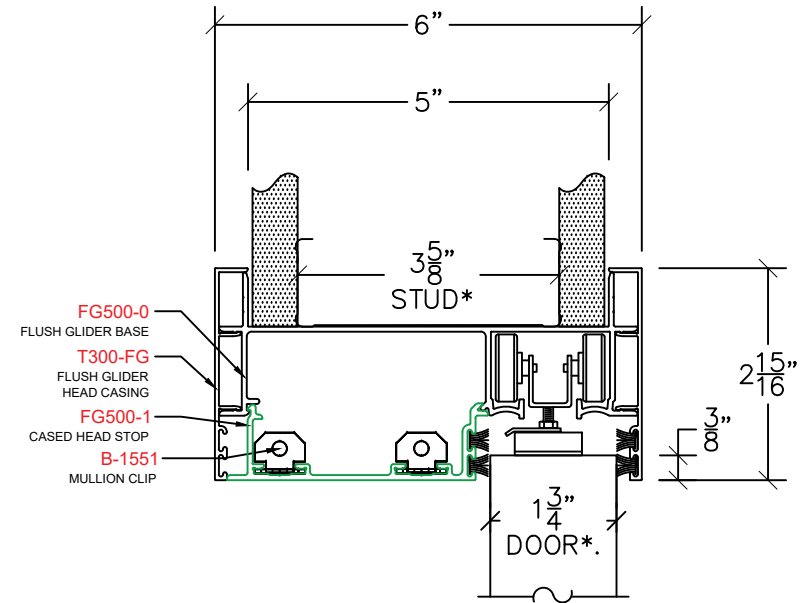
# FLUSH GLIDER SECTION VIEWS - WRAP



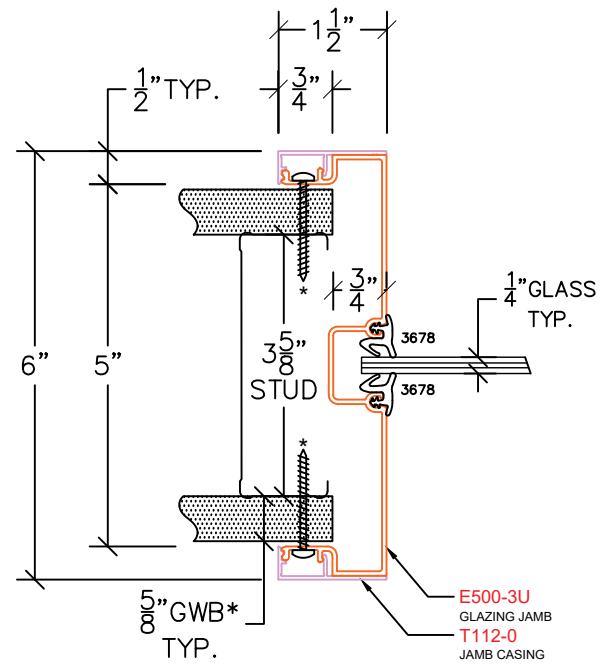
FG100R – FLUSH GLIDER CASED RECEIVER AT WALL JAMB



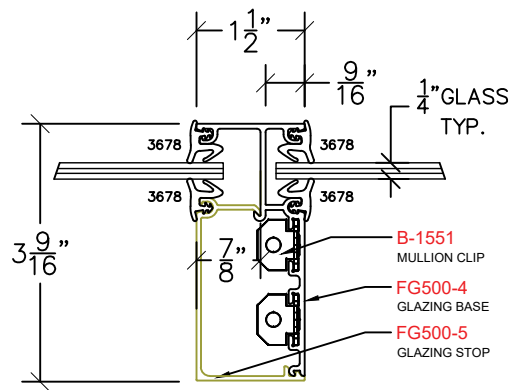
FG150 – FLUSH GLIDER @ CASED VERTICAL MULLION



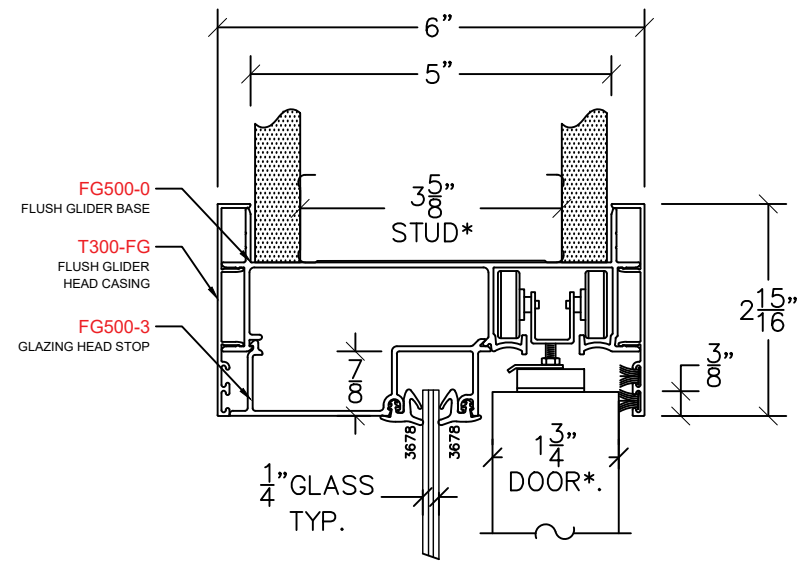
FG200 – FLUSH GLIDER DOOR HEAD



FG300 – GLAZING JAMB



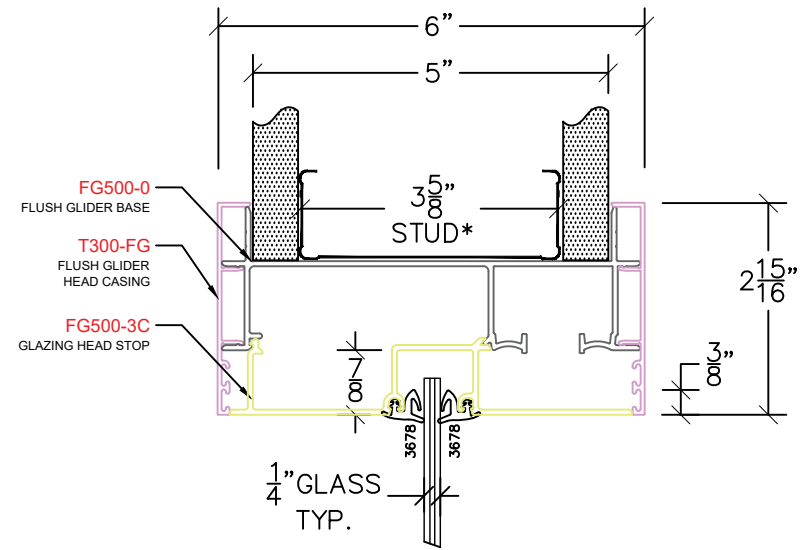
FG305 – FLUSH GLIDER @ GLAZED VERTICAL MULLION



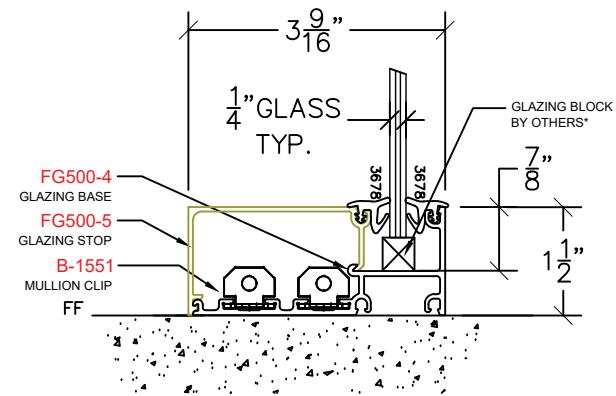
FG400 – FLUSH GLIDER GLAZING HEAD

NOTES: SPECIAL HARDWARE PREPS LISTED IN THE FABRICATION NOTES MAY REQUIRE FIELD NOTCHING OF THE WALL, STUDS, AND/OR DRYWALL (i.e., ELECTRONIC POWER TRANSFERS, CONCEALED CLOSERS). IN SOME INSTANCES, THE ALUMINUM FRAMES THEMSELVES WILL NEED FIELD MODIFICATIONS TO ACCOMMODATE SPECIALTY HARDWARE REQUIREMENTS, AND ADDITIONAL COORDINATION WITH OTHER TRADES MAY BE REQUIRED PRIOR TO OR DURING INSTALLATION.

# FLUSH GLIDER SECTION VIEWS - WRAP



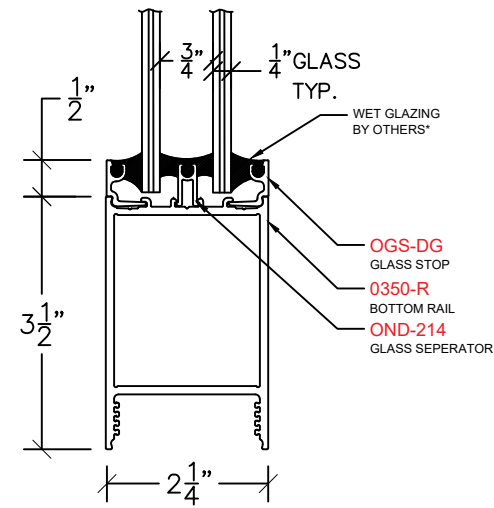
FG400C – FG GLAZING HEAD COVERED



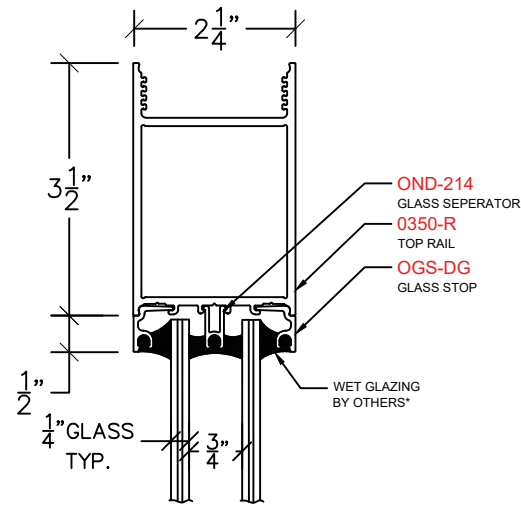
FG420 – FLUSH GLIDER @ SILL

NOTES: SPECIAL HARDWARE PREPS LISTED IN THE FABRICATION NOTES MAY REQUIRE FIELD NOTCHING OF THE WALL,  
 STUDS, AND/OR DRYWALL (i.e., ELECTRONIC POWER TRANSFERS, CONCEALED CLOSERS. IN SOME INSTANCES, THE  
 ALUMINUM FRAMES THEMSELVES WILL NEED FIELD MODIFICATIONS TO ACCOMMODATE SPECIALTY HARDWARE  
 REQUIREMENTS, AND ADDITIONAL COORDINATION WITH OTHER TRADES MAY BE REQUIRED PRIOR TO OR DURING  
 INSTALLATION.

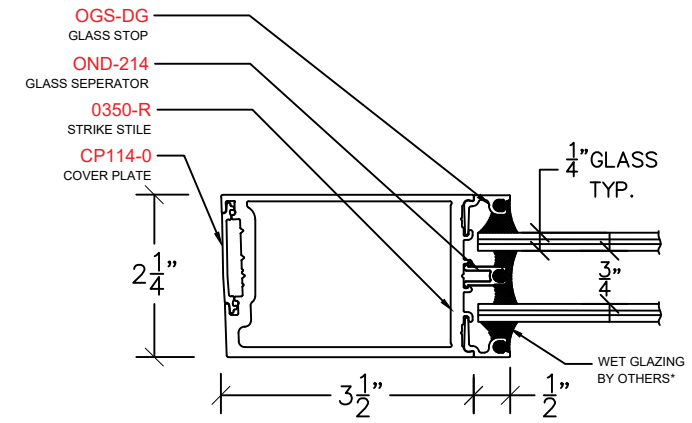
# DOOR SECTION VIEWS



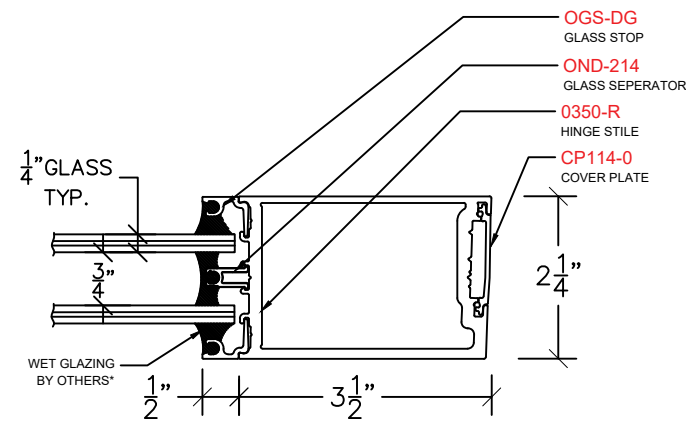
BOTTOM RAIL "BR"



TOP RAIL "TR"



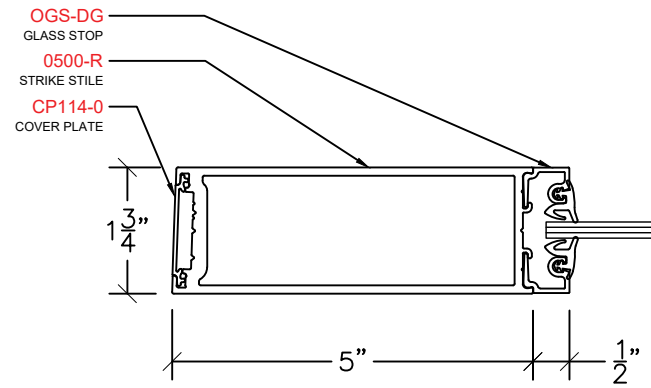
STRIKE STILE "SS"



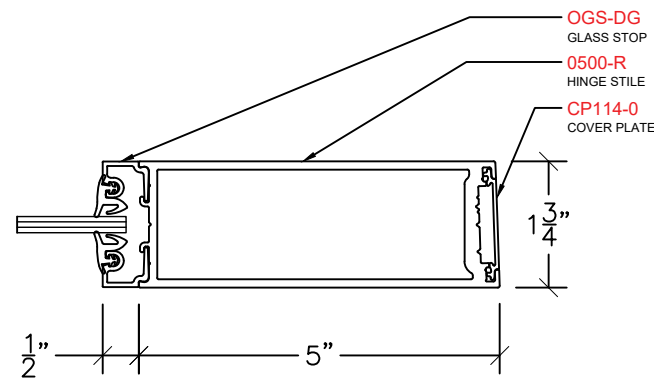
HINGE STILE "HS"

NOTES: SPECIAL HARDWARE PREPS LISTED IN THE FABRICATION NOTES MAY REQUIRE FIELD NOTCHING OF THE WALL, STUDS, AND/OR DRYWALL (i.e., ELECTRONIC POWER TRANSFERS, CONCEALED CLOSERS). IN SOME INSTANCES, THE ALUMINUM FRAMES THEMSELVES WILL NEED FIELD MODIFICATIONS TO ACCOMMODATE SPECIALTY HARDWARE REQUIREMENTS, AND ADDITIONAL COORDINATION WITH OTHER TRADES MAY BE REQUIRED PRIOR TO OR DURING INSTALLATION.

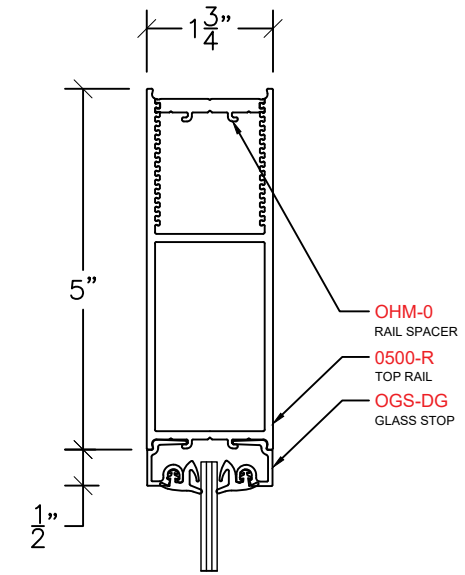
# DOOR SECTION VIEWS



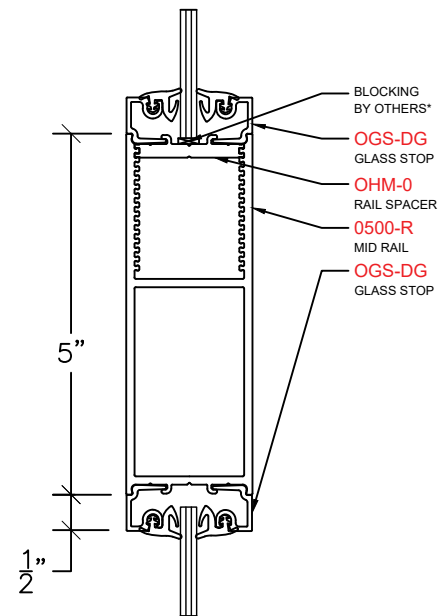
STRIKE STILE "SS"



HINGE STILE "HS"



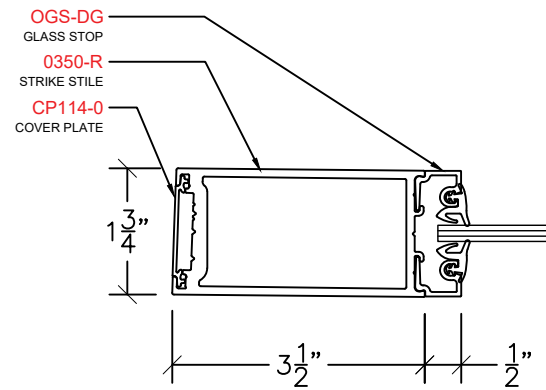
TOP RAIL "TR"



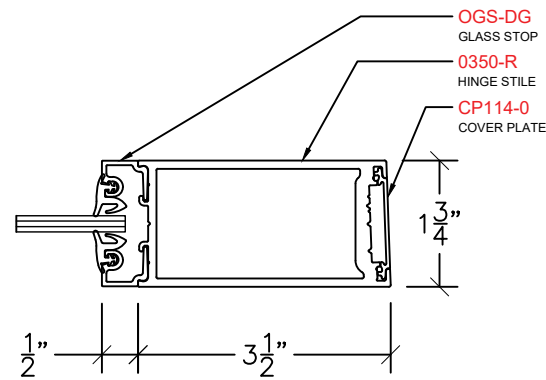
MID RAIL "MS"

NOTES: SPECIAL HARDWARE PREPS LISTED IN THE FABRICATION NOTES MAY REQUIRE FIELD NOTCHING OF THE WALL, STUDS, AND/OR DRYWALL (i.e., ELECTRONIC POWER TRANSFERS, CONCEALED CLOSERS. IN SOME INSTANCES, THE ALUMINUM FRAMES THEMSELVES WILL NEED FIELD MODIFICATIONS TO ACCOMMODATE SPECIALTY HARDWARE REQUIREMENTS, AND ADDITIONAL COORDINATION WITH OTHER TRADES MAY BE REQUIRED PRIOR TO OR DURING INSTALLATION.

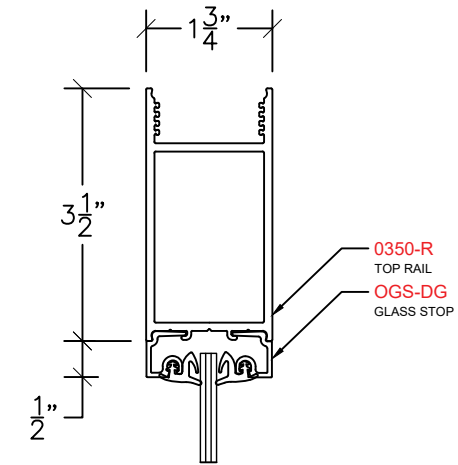
# DOOR SECTION VIEWS



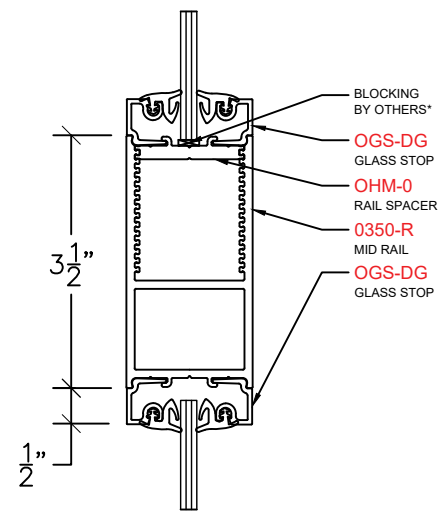
STRIKE STILE "SS"



HINGE STILE "HS"



TOP RAIL "TR"

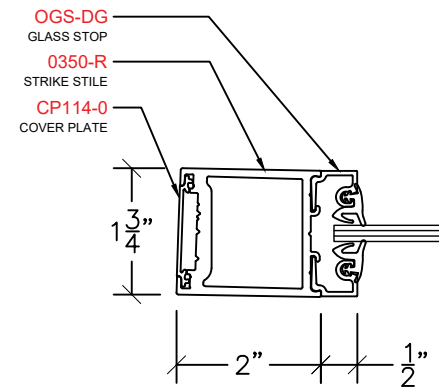


MID RAIL "MS"

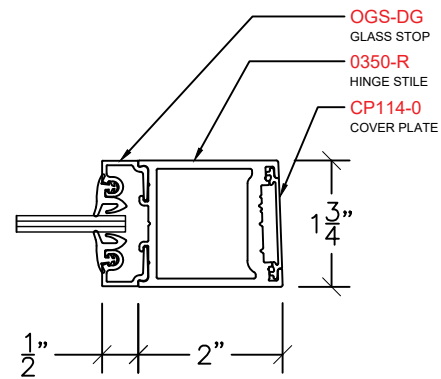
NOTES: SPECIAL HARDWARE PREPS LISTED IN THE FABRICATION NOTES MAY REQUIRE FIELD NOTCHING OF THE WALL, STUDS, AND/OR DRYWALL (i.e., ELECTRONIC POWER TRANSFERS, CONCEALED CLOSERS). IN SOME INSTANCES, THE ALUMINUM FRAMES THEMSELVES WILL NEED FIELD MODIFICATIONS TO ACCOMMODATE SPECIALTY HARDWARE REQUIREMENTS, AND ADDITIONAL COORDINATION WITH OTHER TRADES MAY BE REQUIRED PRIOR TO OR DURING INSTALLATION.



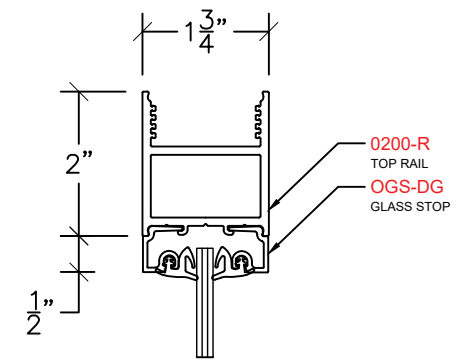
# DOOR SECTION VIEWS



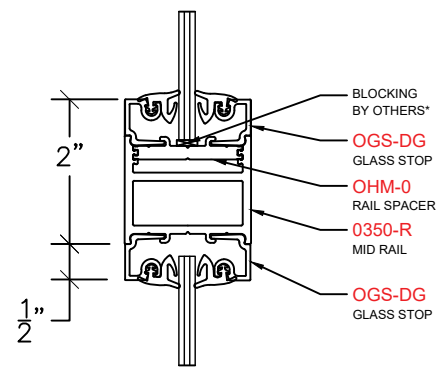
STRIKE STILE "SS"



HINGE STILE "HS"



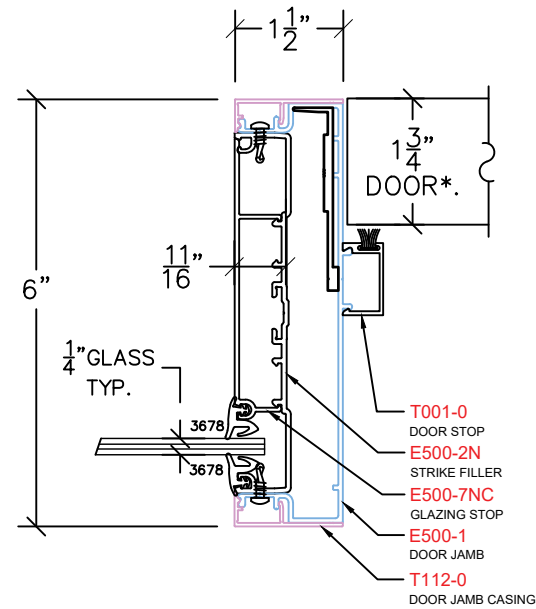
TOP RAIL "TR"



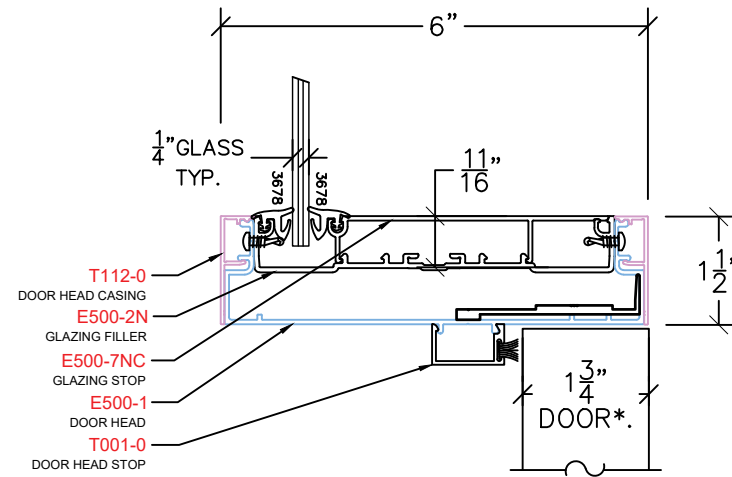
MID RAIL "MS"

NOTES: SPECIAL HARDWARE PREPS LISTED IN THE FABRICATION NOTES MAY REQUIRE FIELD NOTCHING OF THE WALL, STUDS, AND/OR DRYWALL (i.e., ELECTRONIC POWER TRANSFERS, CONCEALED CLOSERS). IN SOME INSTANCES, THE ALUMINUM FRAMES THEMSELVES WILL NEED FIELD MODIFICATIONS TO ACCOMMODATE SPECIALTY HARDWARE REQUIREMENTS, AND ADDITIONAL COORDINATION WITH OTHER TRADES MAY BE REQUIRED PRIOR TO OR DURING INSTALLATION.

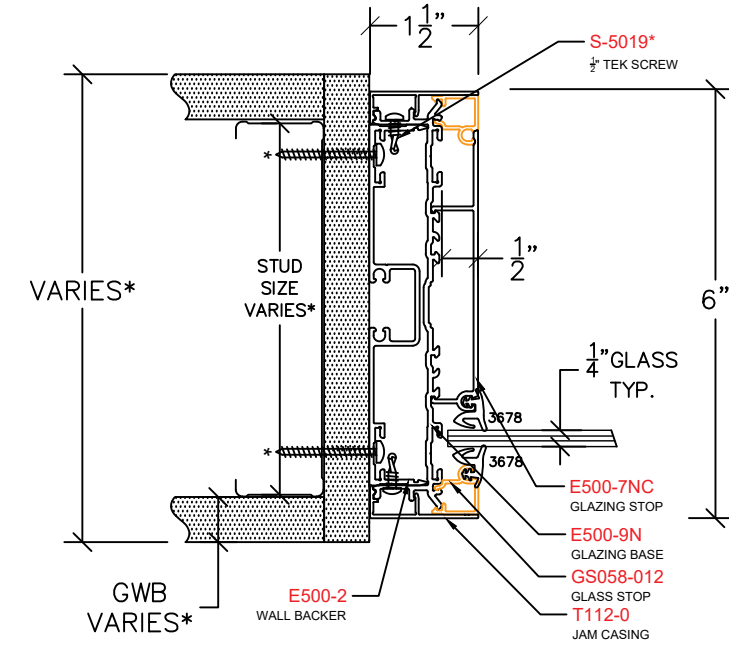
# OFFSET SECTION VIEWS



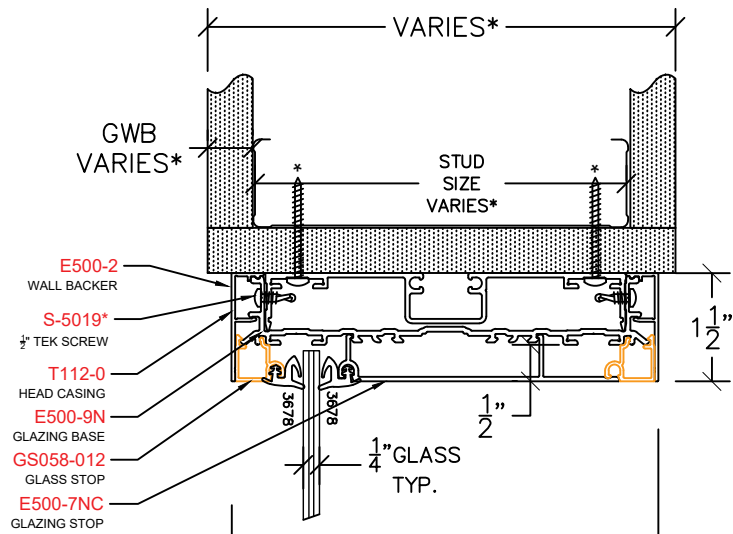
DOOR JAMB SIDELIGHT 0150



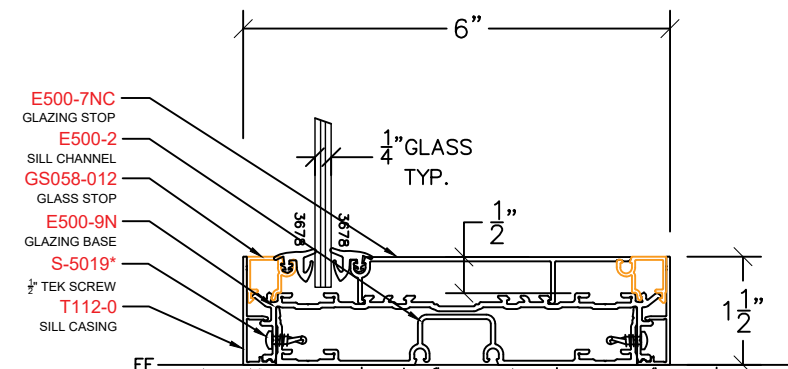
DOOR HEAD TRANSOM 0215



GLAZING JAMB 0300



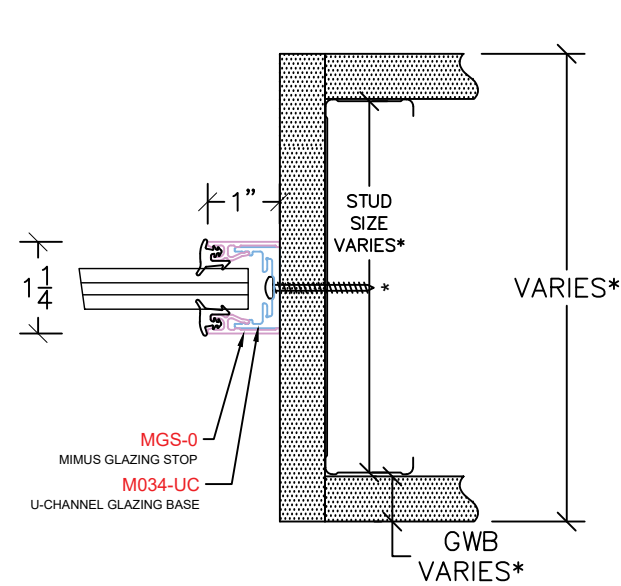
GLAZING HEAD 0400



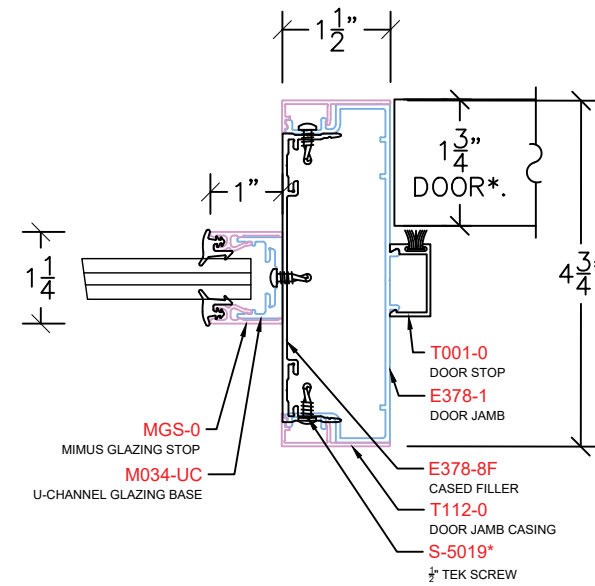
GLAZING SILL 0420

NOTES: SPECIAL HARDWARE PREPS LISTED IN THE FABRICATION NOTES MAY REQUIRE FIELD NOTCHING OF THE WALL, STUDS, AND/OR DRYWALL (i.e., ELECTRONIC POWER TRANSFERS, CONCEALED CLOSERS). IN SOME INSTANCES, THE ALUMINUM FRAMES THEMSELVES WILL NEED FIELD MODIFICATIONS TO ACCOMMODATE SPECIALTY HARDWARE REQUIREMENTS, AND ADDITIONAL COORDINATION WITH OTHER TRADES MAY BE REQUIRED PRIOR TO OR DURING INSTALLATION.

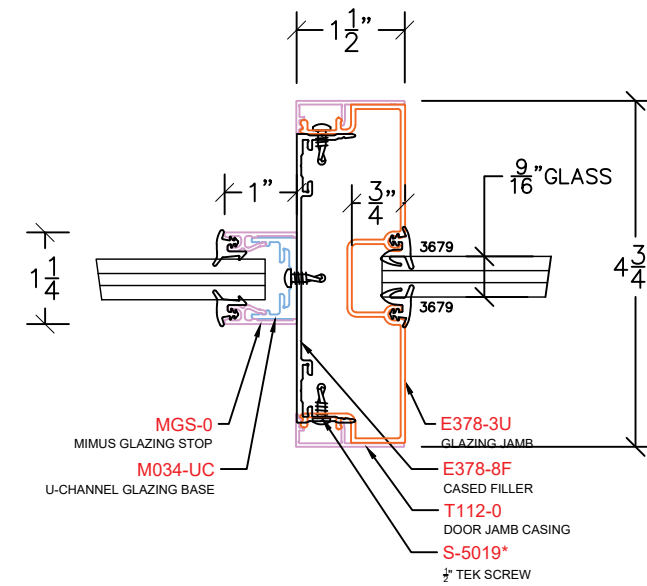
# 1" FACE U-CHANNEL SECTION VIEWS



GLAZING JAMB M400



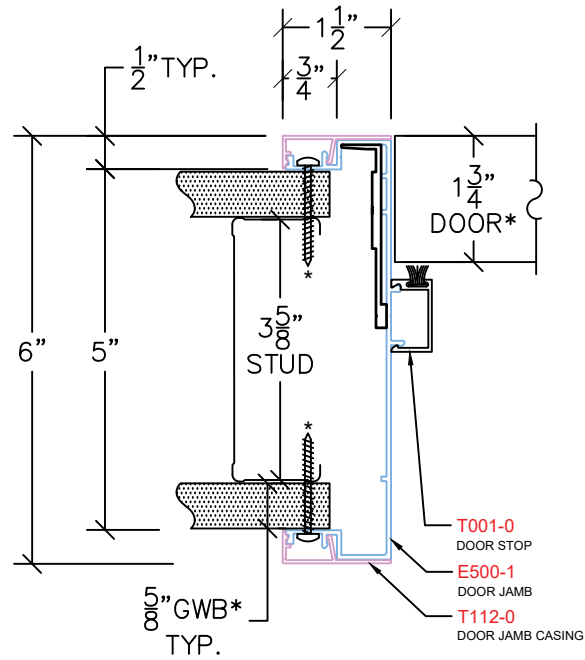
DOOR JAMB E108



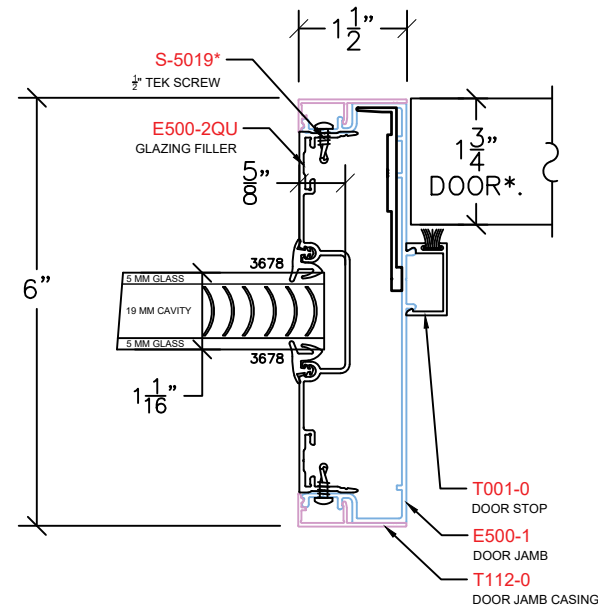
GLAZING JAMB E308

NOTES: SPECIAL HARDWARE PREPS LISTED IN THE FABRICATION NOTES MAY REQUIRE FIELD NOTCHING OF THE WALL, STUDS, AND/OR DRYWALL (i.e., ELECTRONIC POWER TRANSFERS, CONCEALED CLOSERS). IN SOME INSTANCES, THE ALUMINUM FRAMES THEMSELVES WILL NEED FIELD MODIFICATIONS TO ACCOMMODATE SPECIALTY HARDWARE REQUIREMENTS, AND ADDITIONAL COORDINATION WITH OTHER TRADES MAY BE REQUIRED PRIOR TO OR DURING INSTALLATION.

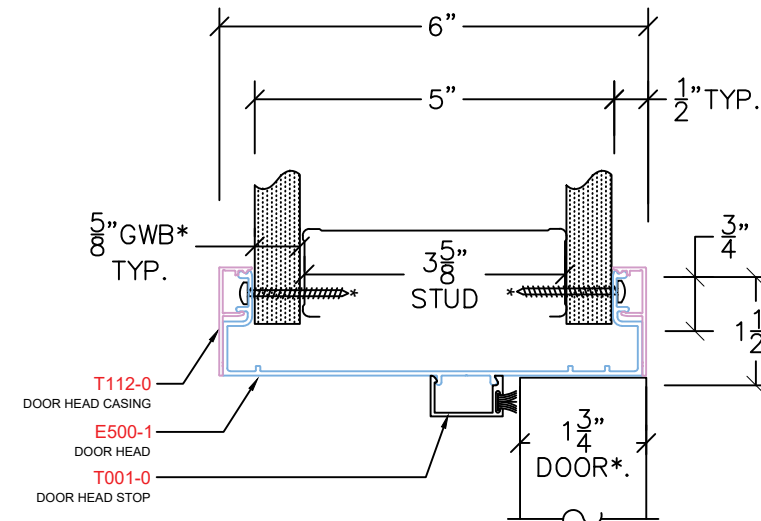
# INTERNAL BLIND SECTION VIEWS



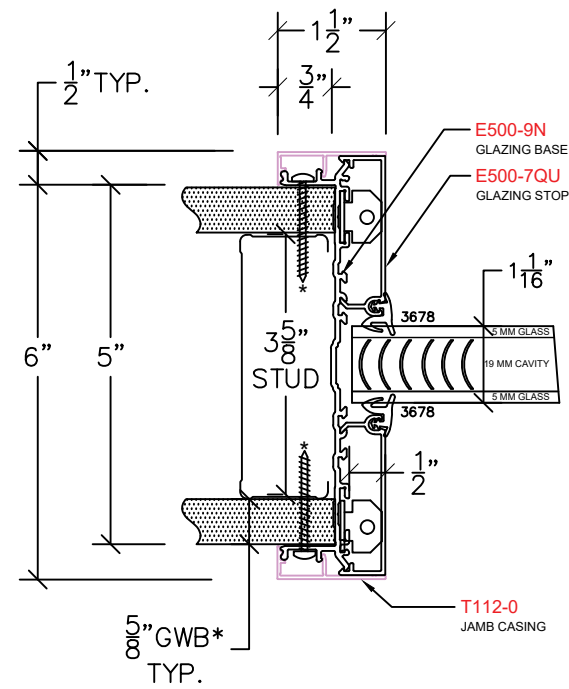
DOOR JAMB E100



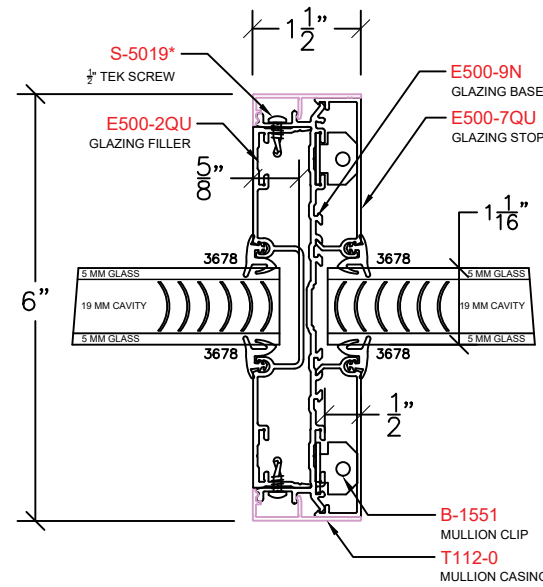
DOOR JAMB SIDELIGHT E150



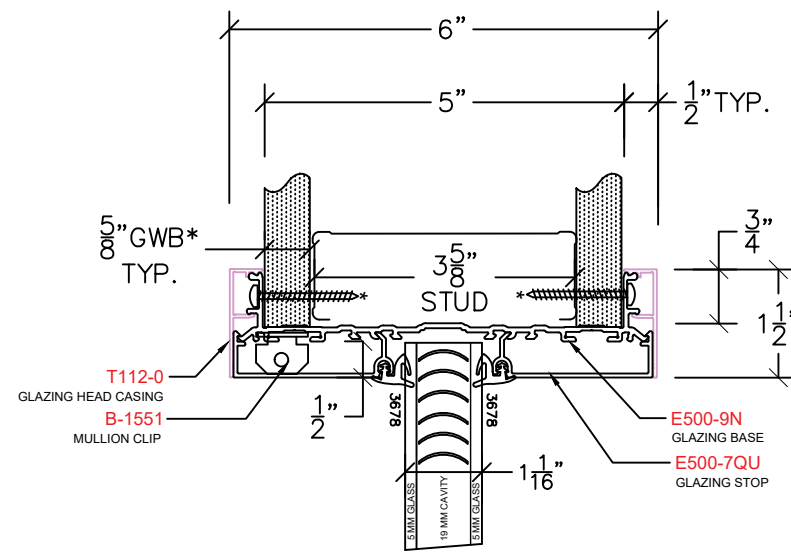
DOOR HEAD E200



GLAZING JAMB E309



GLAZING INTERMEDIATE VERTICAL E307



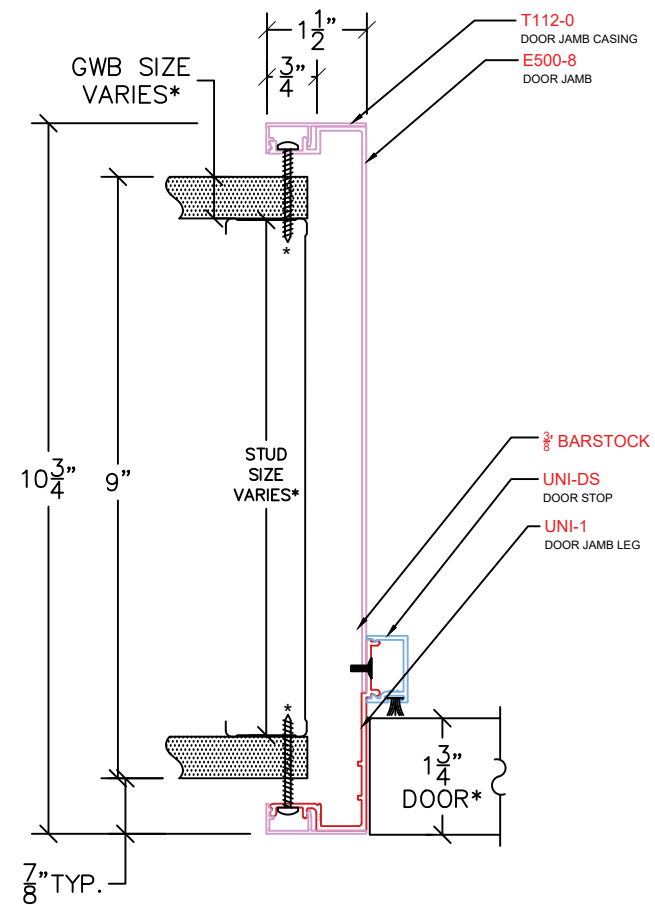
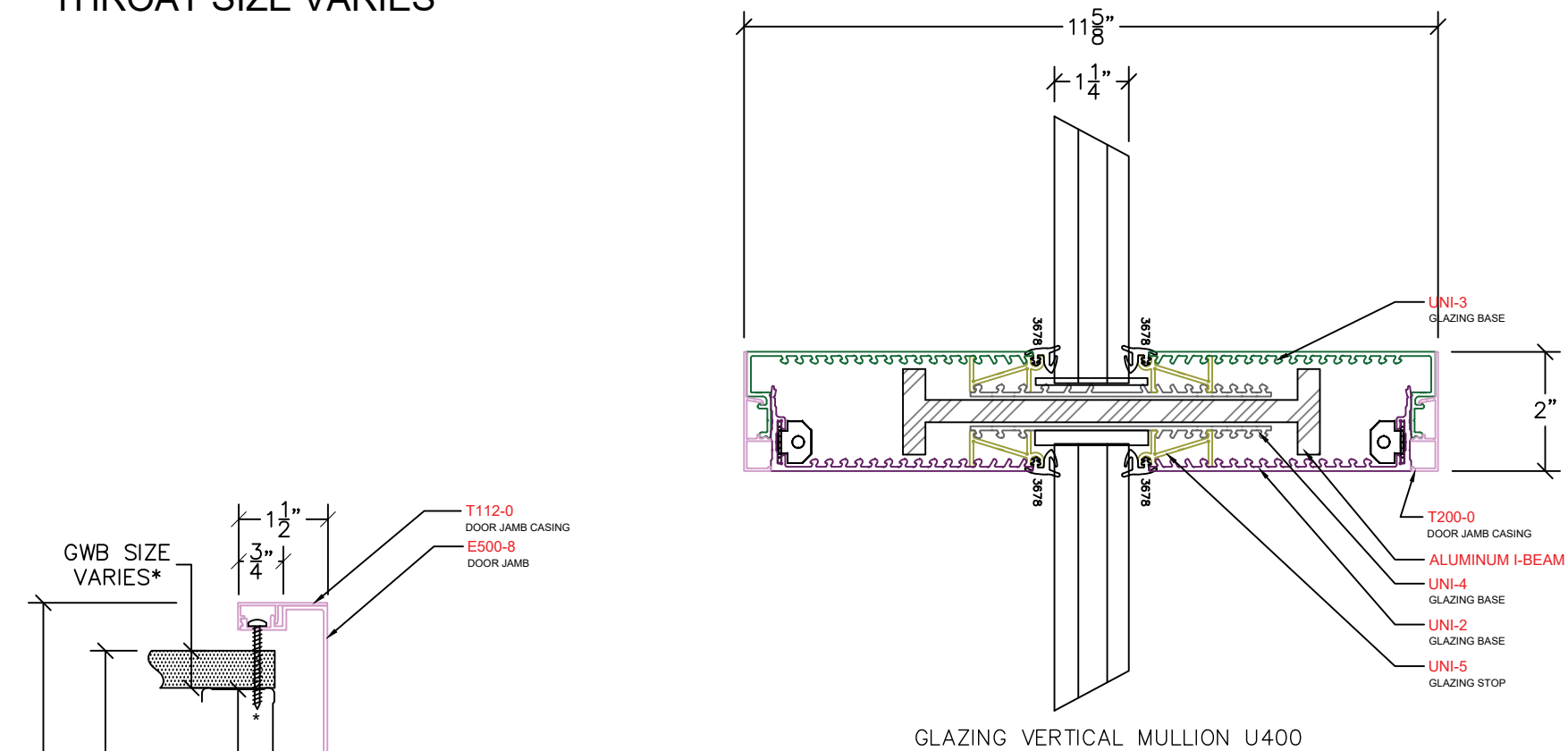
GLAZING HEAD E409

NOTES: SPECIAL HARDWARE PREPS LISTED IN THE FABRICATION NOTES MAY REQUIRE FIELD NOTCHING OF THE WALL, STUDS, AND/OR DRYWALL (i.e., ELECTRONIC POWER TRANSFERS, CONCEALED CLOSERS). IN SOME INSTANCES, THE ALUMINUM FRAMES THEMSELVES WILL NEED FIELD MODIFICATIONS TO ACCOMMODATE SPECIALTY HARDWARE REQUIREMENTS, AND ADDITIONAL COORDINATION WITH OTHER TRADES MAY BE REQUIRED PRIOR TO OR DURING INSTALLATION.

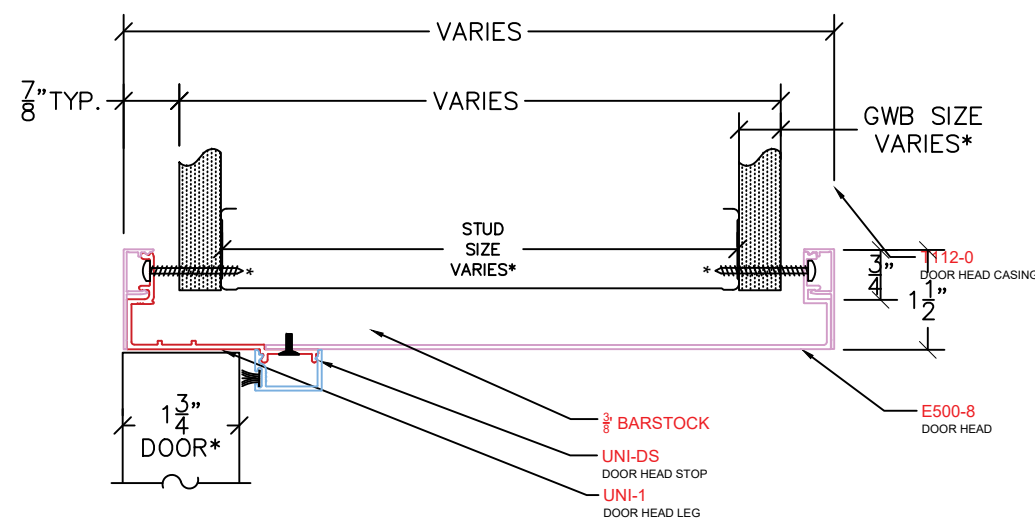
# BALLISTIC EAGLE-UNI SECTION VIEWS

Pat. No. US 10,871,024 B2

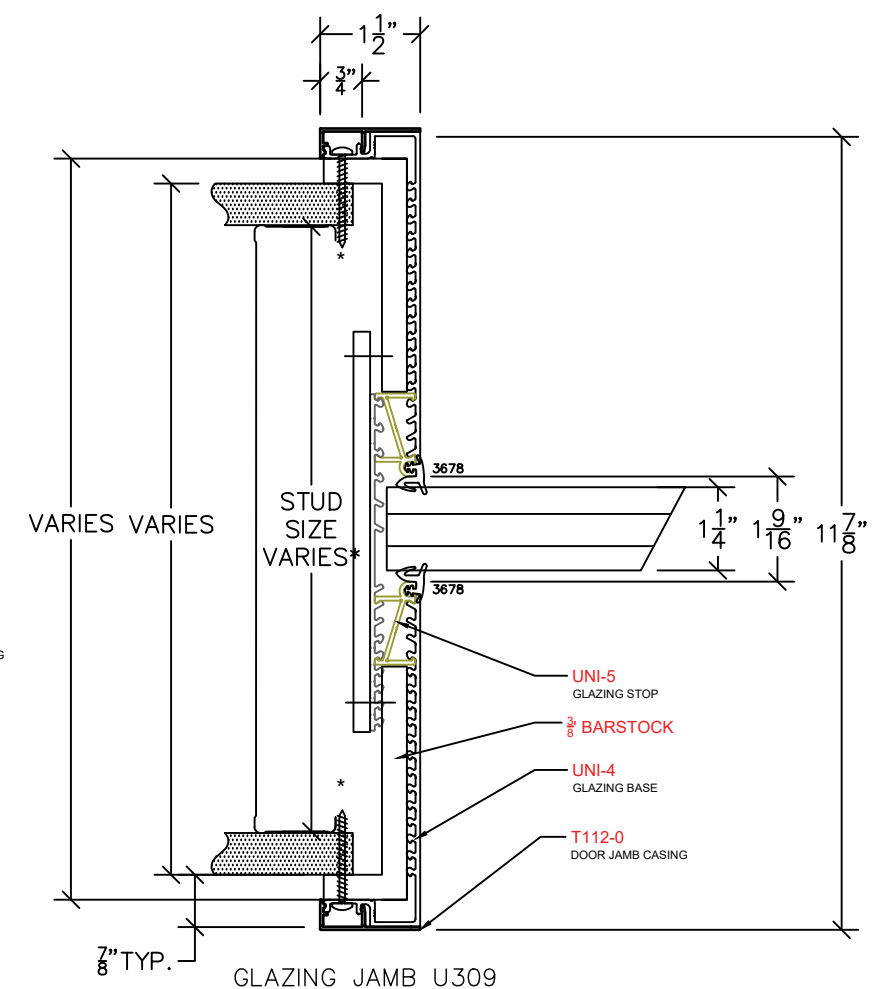
THROAT SIZE VARIES\*



DOOR JAMB U100



DOOR HEAD U200



GLAZING JAMB U309

NOTES: SPECIAL HARDWARE PREPS LISTED IN THE FABRICATION NOTES MAY REQUIRE FIELD NOTCHING OF THE WALL, STUDS, AND/OR DRYWALL (i.e., ELECTRONIC POWER TRANSFERS, CONCEALED CLOSERS). IN SOME INSTANCES, THE ALUMINUM FRAMES THEMSELVES WILL NEED FIELD MODIFICATIONS TO ACCOMMODATE SPECIALTY HARDWARE REQUIREMENTS, AND ADDITIONAL COORDINATION WITH OTHER TRADES MAY BE REQUIRED PRIOR TO OR DURING INSTALLATION.